

Product datasheet for **TA377375S**

IGF2BP1 Rabbit Polyclonal Antibody

Product data:

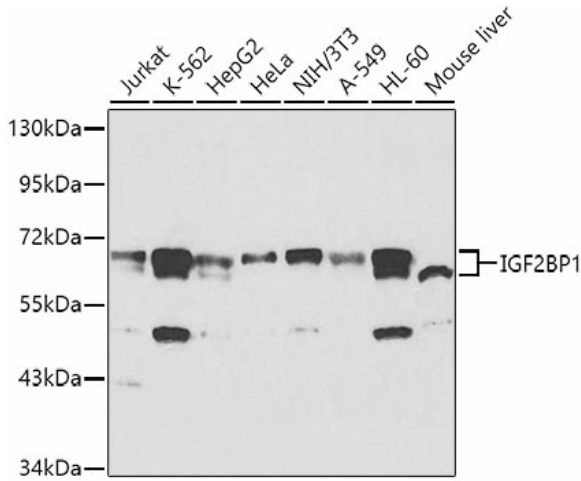
Product Type:	Primary Antibodies
Applications:	IF, IP, WB
Recommended Dilution:	WB,1:500 - 1:2000 IF,1:50 - 1:200 IP,1:20 - 1:50
Reactivity:	Human, Mouse, Rat
Modifications:	Unmodified
Host:	Rabbit
Isotype:	IgG
Clonality:	Polyclonal
Immunogen:	A synthetic peptide corresponding to a sequence within amino acids 480 to the C-terminus of human IGF2BP1 (NP_006537.3).
Formulation:	Buffer: PBS with 0.02% sodium azide,50% glycerol,pH7.3.
Concentration:	lot specific
Purification:	Affinity purification
Conjugation:	Unconjugated
Storage:	Store at -20°C. Avoid freeze / thaw cycles.
Stability:	Shelf life: one year from despatch.
Predicted Protein Size:	48kDa/63kDa
Gene Name:	insulin like growth factor 2 mRNA binding protein 1
Database Link:	Entrez Gene 10642 Human Q9NZI8
Background:	This gene encodes a member of the insulin-like growth factor 2 mRNA-binding protein family. The protein encoded by this gene contains four K homology domains and two RNA recognition motifs. It functions by binding to the mRNAs of certain genes, including insulin-like growth factor 2, beta-actin and beta-transducin repeat-containing protein, and regulating their translation. Two transcript variants encoding different isoforms have been found for this gene.



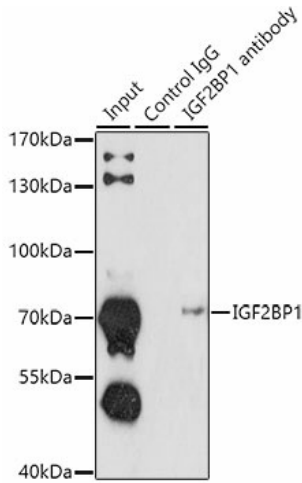
[View online »](#)

Synonyms: CRD-BP; CRDBP; IMP-1; IMP1; VICKZ1; ZBP-1; ZBP1

Product images:



Western blot analysis of extracts of various cell lines, using IGF2BP1 antibody ([TA377375]) at 1:1000 dilution. | Secondary antibody: HRP Goat Anti-Rabbit IgG (H+L) at 1:10000 dilution. | Lysates/proteins: 25ug per lane. | Blocking buffer: 3% nonfat dry milk in TBST.



Immunoprecipitation analysis of 200ug extracts of K562 cells using 1ug IGF2BP1 antibody ([TA377375]). Western blot was performed from the immunoprecipitate using IGF2BP1 antibody ([TA377375]) at a dilution of 1:1000.