

Product datasheet for **TA377374S**

IGF1 Receptor (IGF1R) Rabbit Polyclonal Antibody

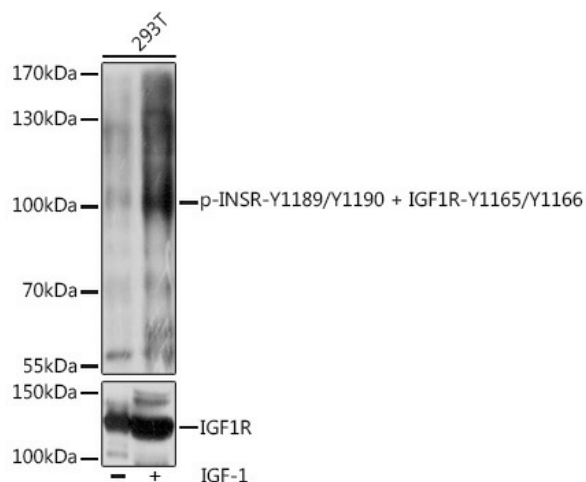
Product data:

Product Type:	Primary Antibodies
Applications:	WB
Recommended Dilution:	WB,1:500 - 1:2000
Reactivity:	Human, Mouse, Rat
Modifications:	Phospho Y1189/Y1190,Phospho Y1165/Y1166
Host:	Rabbit
Isotype:	IgG
Clonality:	Polyclonal
Immunogen:	A phospho specific peptide corresponding to residues surrounding Y1189/Y1190 of human INSR and Y1165/Y1166 of human IGF1R.
Formulation:	Buffer: PBS with 0.02% sodium azide,50% glycerol,pH7.3.
Concentration:	lot specific
Purification:	Affinity purification
Conjugation:	Unconjugated
Storage:	Store at -20°C. Avoid freeze / thaw cycles.
Stability:	Shelf life: one year from despatch.
Predicted Protein Size:	154kDa/155kDa/156kDa
Gene Name:	insulin like growth factor 1 receptor
Database Link:	Entrez Gene 3480 Human P08069
Background:	This receptor binds insulin-like growth factor with a high affinity. It has tyrosine kinase activity. The insulin-like growth factor I receptor plays a critical role in transformation events. Cleavage of the precursor generates alpha and beta subunits. It is highly overexpressed in most malignant tissues where it functions as an anti-apoptotic agent by enhancing cell survival. Alternatively spliced transcript variants encoding distinct isoforms have been found for this gene. [provided by RefSeq, May 2014]
Synonyms:	CD221; IGFIR; IGFR; JTK13; MGC18216; MGC142170; MGC142172



[View online »](#)

Product images:



Western blot analysis of extracts of 293T cells, using Phospho-INSR-Y1189/Y1190 + IGF1R-Y1165/Y1166 antibody ([TA377374]) at 1:1000 dilution or IGF1R antibody (A0243). 293T cells were treated by IGF-1 (50 ng/mL) at 37°C for 5 minutes after serum-starvation overnight. | Secondary antibody: HRP Goat Anti-Rabbit IgG (H+L) at 1:10000 dilution. | Lysates/proteins: 25ug per lane. | Blocking buffer: 3% BSA. | Detection: ECL Basic Kit . | Exposure time: 1s.