

Product datasheet for **TA377374**

IGF1 Receptor (IGF1R) Rabbit Polyclonal Antibody

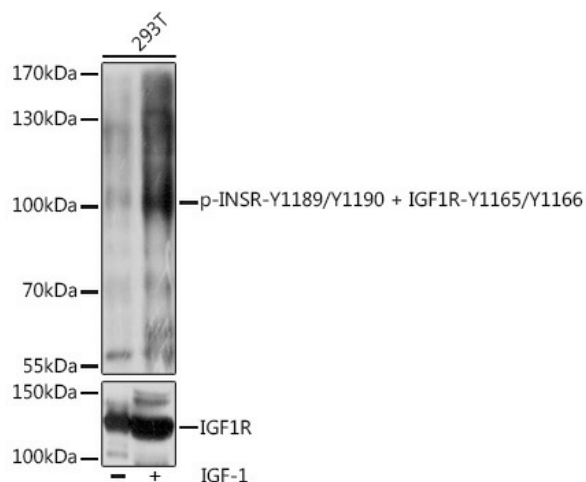
Product data:

| | |
|-------------------------|--|
| Product Type: | Primary Antibodies |
| Applications: | WB |
| Recommended Dilution: | WB,1:500 - 1:2000 |
| Reactivity: | Human, Mouse, Rat |
| Modifications: | Phospho Y1189/Y1190,Phospho Y1165/Y1166 |
| Host: | Rabbit |
| Isotype: | IgG |
| Clonality: | Polyclonal |
| Immunogen: | A phospho specific peptide corresponding to residues surrounding Y1189/Y1190 of human INSR and Y1165/Y1166 of human IGF1R. |
| Formulation: | Buffer: PBS with 0.02% sodium azide,50% glycerol,pH7.3. |
| Concentration: | lot specific |
| Purification: | Affinity purification |
| Conjugation: | Unconjugated |
| Storage: | Store at -20°C. Avoid freeze / thaw cycles. |
| Stability: | Shelf life: one year from despatch. |
| Predicted Protein Size: | 154kDa/155kDa/156kDa |
| Gene Name: | insulin like growth factor 1 receptor |
| Database Link: | Entrez Gene 3480 Human P08069 |
| Background: | This receptor binds insulin-like growth factor with a high affinity. It has tyrosine kinase activity. The insulin-like growth factor I receptor plays a critical role in transformation events. Cleavage of the precursor generates alpha and beta subunits. It is highly overexpressed in most malignant tissues where it functions as an anti-apoptotic agent by enhancing cell survival. Alternatively spliced transcript variants encoding distinct isoforms have been found for this gene. [provided by RefSeq, May 2014] |
| Synonyms: | CD221; IGFIR; IGFR; JTK13; MGC18216; MGC142170; MGC142172 |



[View online »](#)

Product images:



Western blot analysis of extracts of 293T cells, using Phospho-INSR-Y1189/Y1190 + IGF1R-Y1165/Y1166 antibody (TA377374) at 1:1000 dilution or IGF1R antibody (A0243). 293T cells were treated by IGF-1 (50 ng/mL) at 37°C for 5 minutes after serum-starvation overnight. | Secondary antibody: HRP Goat Anti-Rabbit IgG (H+L) at 1:10000 dilution. | Lysates/proteins: 25ug per lane. | Blocking buffer: 3% BSA. | Detection: ECL Basic Kit. | Exposure time: 1s.