

Product datasheet for **TA377365S**

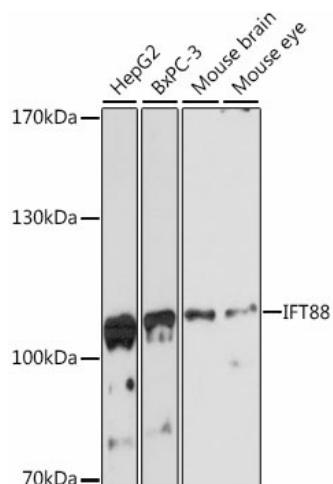
TTC10 (IFT88) Rabbit Polyclonal Antibody

Product data:

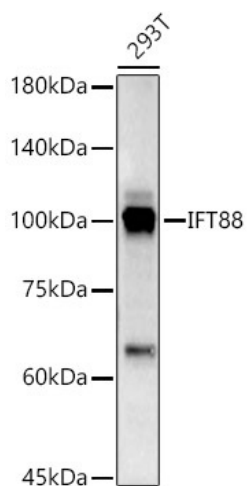
Product Type:	Primary Antibodies
Applications:	ELISA, ICC/IF, WB
Recommended Dilution:	WB, 1:500 - 1:1000 IF/ICC, 1:50 - 1:200 ELISA, Recommended starting concentration is 1 µg/mL. Please optimize the concentration based on your specific assay requirements.
Reactivity:	Human, Rat, Mouse
Modifications:	Unmodified
Host:	Rabbit
Isotype:	IgG
Clonality:	Polyclonal
Formulation:	PBS with 0.05% proclin300, 50% glycerol, pH 7.3.
Concentration:	lot specific
Purification:	Affinity purification
Conjugation:	Unconjugated
Storage:	Store at -20°C. Avoid freeze / thaw cycles.
Stability:	Shelf life: one year from despatch.
Predicted Protein Size:	93kDa
Gene Name:	intraflagellar transport 88
Database Link:	Entrez Gene 8100 Human Q13099
Background:	This gene encodes a member of the tetratrico peptide repeat (TPR) family. The encoded protein is involved in cilium biogenesis. Mutations of a similar gene in mouse can cause polycystic kidney disease. Several transcript variants encoding distinct isoforms have been identified for this gene.
Synonyms:	D13S1056E; DAF19; hTg737; MGC26259; polaris; RP11-172H24.2; TG737; TTC10


[View online »](#)

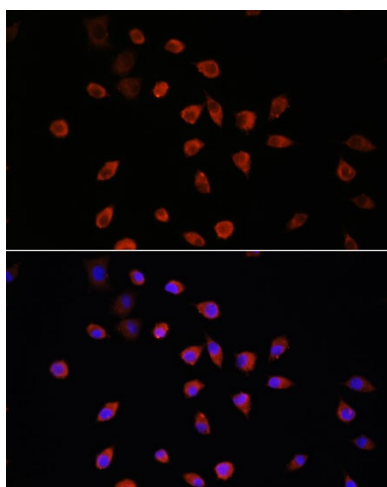
Product images:



Western blot analysis of lysates from Rat testis



Western blot analysis of lysates from 293T cells



Immunofluorescence analysis of L929 cells using IFT88 Rabbit pAb ([TA377365]) at dilution of 1:100. Secondary antibody: Cy3-conjugated Goat anti-Rabbit IgG (H+L) (AS007) at 1:500 dilution. Blue: DAPI for nuclear staining.