

Product datasheet for **TA377365**

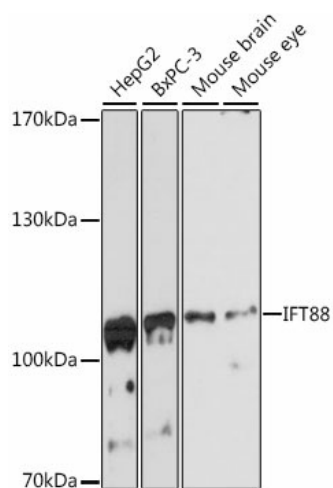
TTC10 (IFT88) Rabbit Polyclonal Antibody

Product data:

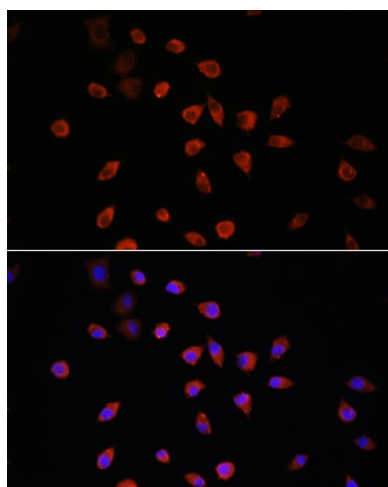
Product Type:	Primary Antibodies
Applications:	ICC/IF, WB
Recommended Dilution:	WB,1:500 - 1:2000 IF,1:50 - 1:200
Reactivity:	Human, Rat
Modifications:	Unmodified
Host:	Rabbit
Isotype:	IgG
Clonality:	Polyclonal
Immunogen:	Recombinant fusion protein containing a sequence corresponding to amino acids 534-833 of human IFT88 (NP_783195.2).
Formulation:	Buffer: PBS with 0.02% sodium azide,50% glycerol,pH7.3.
Concentration:	lot specific
Purification:	Affinity purification
Conjugation:	Unconjugated
Storage:	Store at -20°C. Avoid freeze / thaw cycles.
Stability:	Shelf life: one year from despatch.
Predicted Protein Size:	92kDa/93kDa/94kDa
Gene Name:	intraflagellar transport 88
Database Link:	Entrez Gene 8100 Human Q13099
Background:	This gene encodes a member of the tetratrico peptide repeat (TPR) family. Mutations of a similar gene in mouse can cause polycystic kidney disease. Two transcript variants encoding distinct isoforms have been identified for this gene.
Synonyms:	D13S1056E; DAF19; hTg737; MGC26259; polaris; RP11-172H24.2; TG737; TTC10



[View online »](#)

Product images:

Western blot analysis of extracts of various cell lines, using IFT88 antibody (TA377365) at 1:3000 dilution. | Secondary antibody: HRP Goat Anti-Rabbit IgG (H+L) at 1:10000 dilution. | Lysates/proteins: 25ug per lane. | Blocking buffer: 3% nonfat dry milk in TBST. | Detection: ECL Basic Kit . | Exposure time: 90s.



Immunofluorescence analysis of L929 cells using IFT88 antibody (TA377365) at dilution of 1:100. Blue: DAPI for nuclear staining.