

Product datasheet for **TA377362S**

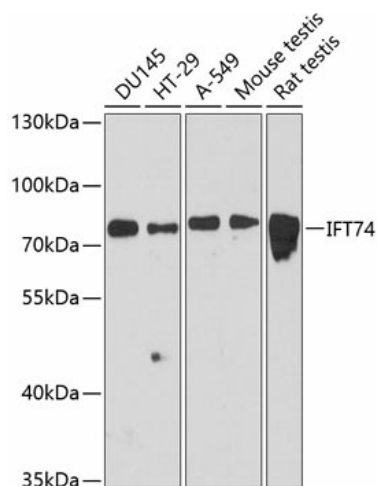
CMG1 (IFT74) Rabbit Polyclonal Antibody

Product data:

Product Type:	Primary Antibodies
Applications:	ELISA, WB
Recommended Dilution:	WB, 1:1000 - 1:3000 ELISA, Recommended starting concentration is 1 µg/mL. Please optimize the concentration based on your specific assay requirements.
Reactivity:	Human, Mouse, Rat
Modifications:	Unmodified
Host:	Rabbit
Isotype:	IgG
Clonality:	Polyclonal
Formulation:	Buffer: PBS with 0.02% sodium azide, 50% glycerol, pH 7.3.
Concentration:	lot specific
Purification:	Affinity purification
Conjugation:	Unconjugated
Storage:	Store at -20°C. Avoid freeze / thaw cycles.
Stability:	Shelf life: one year from despatch.
Predicted Protein Size:	69kDa
Gene Name:	intraflagellar transport 74
Database Link:	Entrez Gene 80173 Human Q96LB3
Background:	This gene encodes a core intraflagellar transport (IFT) protein which belongs to a multi-protein complex involved in the transport of ciliary proteins along axonemal microtubules. IFT proteins are found at the base of the cilium as well as inside the cilium, where they assemble into long arrays between the ciliary base and tip. This protein, together with intraflagellar transport protein 81, binds and transports tubulin within cilia and is required for ciliogenesis. Naturally occurring mutations in this gene are associated with amyotrophic lateral sclerosis--frontotemporal dementia and Bardet-Biedl Syndrome.
Synonyms:	CCDC2; CMG-1; CMG1; FLJ22621; MGC111562



[View online »](#)

Product images:


Western blot analysis of various lysates using IFT74 Rabbit pAb ([TA377362]) at 1:3000 dilution. Secondary antibody: HRP-conjugated Goat anti-Rabbit IgG (H+L) (AS014) at 1:10000 dilution. Lysates/proteins: 25µg per lane. Blocking buffer: 3% nonfat dry milk in TBST. Detection: ECL Basic Kit (RM00020). Exposure time: 90s.