

## Product datasheet for **TA377352**

### Interferon beta (IFNB1) Rabbit Polyclonal Antibody

#### Product data:

|                         |                                                                                                                    |
|-------------------------|--------------------------------------------------------------------------------------------------------------------|
| Product Type:           | Primary Antibodies                                                                                                 |
| Applications:           | WB                                                                                                                 |
| Recommended Dilution:   | WB,1:500 - 1:2000                                                                                                  |
| Reactivity:             | Human, Mouse                                                                                                       |
| Modifications:          | Unmodified                                                                                                         |
| Host:                   | Rabbit                                                                                                             |
| Isotype:                | IgG                                                                                                                |
| Clonality:              | Polyclonal                                                                                                         |
| Immunogen:              | Recombinant fusion protein containing a sequence corresponding to amino acids 30-187 of human IFNB1 (NP_002167.1). |
| Formulation:            | Buffer: PBS with 0.02% sodium azide,50% glycerol,pH7.3.                                                            |
| Concentration:          | lot specific                                                                                                       |
| Purification:           | Affinity purification                                                                                              |
| Conjugation:            | Unconjugated                                                                                                       |
| Storage:                | Store at -20°C. Avoid freeze / thaw cycles.                                                                        |
| Stability:              | Shelf life: one year from despatch.                                                                                |
| Predicted Protein Size: | 22kDa                                                                                                              |
| Gene Name:              | interferon beta 1                                                                                                  |
| Database Link:          | <a href="#">Entrez Gene 3456 Human P01574</a>                                                                      |



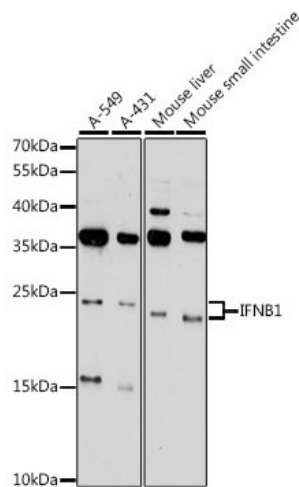
[View online »](#)

**Background:**

This gene encodes a cytokine that belongs to the interferon family of signaling proteins, which are released as part of the innate immune response to pathogens. The protein encoded by this gene belongs to the type I class of interferons, which are important for defense against viral infections. In addition, type I interferons are involved in cell differentiation and anti-tumor defenses. Following secretion in response to a pathogen, type I interferons bind a homologous receptor complex and induce transcription of genes such as those encoding inflammatory cytokines and chemokines. Overactivation of type I interferon secretion is linked to autoimmune diseases. Mice deficient for this gene display several phenotypes including defects in B cell maturation and increased susceptibility to viral infection.

**Synonyms:**

IFB; IFF; IFN-beta; IFNB; MGC96956

**Product images:**

Western blot analysis of extracts of various cell lines, using IFNB1 antibody (TA377352) at 1:3000 dilution. | Secondary antibody: HRP Goat Anti-Rabbit IgG (H+L) at 1:10000 dilution. | Lysates/proteins: 25ug per lane. | Blocking buffer: 3% nonfat dry milk in TBST. | Detection: ECL Enhanced Kit . | Exposure time: 60s.