

Product datasheet for **TA377351**

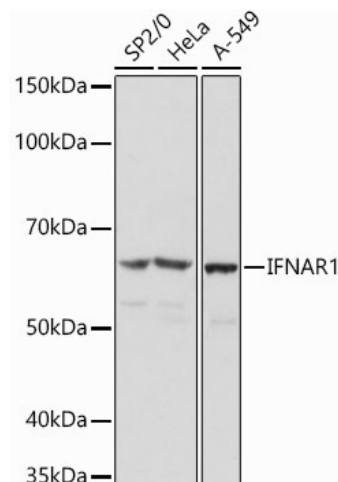
IFNAR1 Rabbit Polyclonal Antibody

Product data:

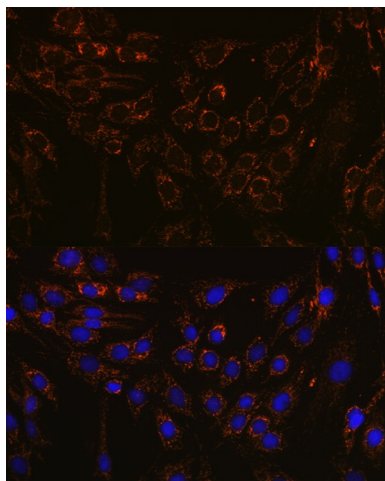
Product Type:	Primary Antibodies
Applications:	ICC/IF, IHC, WB
Recommended Dilution:	WB,1:500 - 1:2000 IHC,1:50 - 1:200 IF,1:50 - 1:200
Reactivity:	Human, Mouse, Rat
Host:	Rabbit
Isotype:	IgG
Clonality:	Polyclonal
Immunogen:	Recombinant fusion protein containing a sequence corresponding to amino acids 470-557 of human IFNAR1 (NP_000620.2).
Formulation:	Buffer: PBS with 0.02% sodium azide,50% glycerol,pH7.3.
Concentration:	lot specific
Purification:	Affinity purification
Conjugation:	Unconjugated
Storage:	Store at -20°C. Avoid freeze / thaw cycles.
Stability:	Shelf life: one year from despatch.
Predicted Protein Size:	49kDa/56kDa/63kDa
Gene Name:	interferon alpha and beta receptor subunit 1
Database Link:	Entrez Gene 3454 Human P17181
Background:	The protein encoded by this gene is a type I membrane protein that forms one of the two chains of a receptor for interferons alpha and beta. Binding and activation of the receptor stimulates Janus protein kinases, which in turn phosphorylate several proteins, including STAT1 and STAT2. The encoded protein also functions as an antiviral factor.
Synonyms:	AVP; IFN-alpha-REC; IFNAR; IFNBR; IFRC



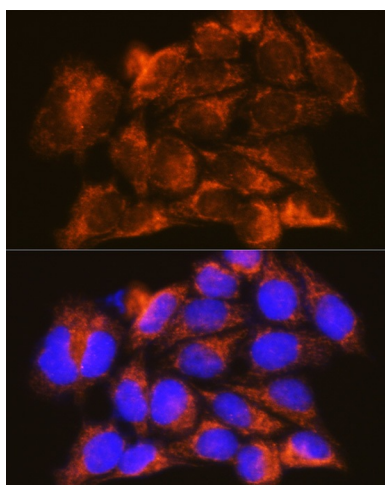
[View online »](#)

Product images:

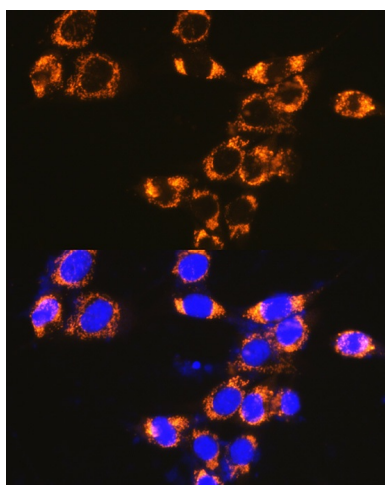
Western blot analysis of extracts of various cell lines, using IFNAR1 antibody (TA377351) at 1:1000 dilution. | Secondary antibody: HRP Goat Anti-Rabbit IgG (H+L) at 1:10000 dilution. | Lysates/proteins: 25ug per lane. | Blocking buffer: 3% nonfat dry milk in TBST. | Detection: ECL Basic Kit. | Exposure time: 3s.



Immunofluorescence analysis of C6 cells using IFNAR1 Rabbit pAb (TA377351) at dilution of 1:100 (40x lens). Blue: DAPI for nuclear staining.



Immunofluorescence analysis of HeLa cells using IFNAR1 Rabbit pAb (TA377351) at dilution of 1:100 (40x lens). Blue: DAPI for nuclear staining.



Immunofluorescence analysis of NIH-3T3 cells using IFNAR1 Rabbit pAb (TA377351) at dilution of 1:100 (40x lens). Blue: DAPI for nuclear staining.