

Product datasheet for **TA377349**

IFNA21 Rabbit Polyclonal Antibody

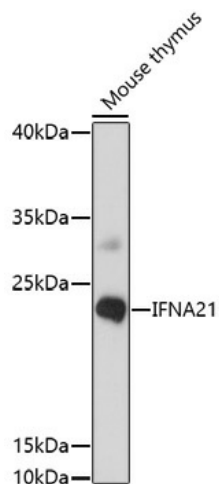
Product data:

Product Type:	Primary Antibodies
Applications:	WB
Recommended Dilution:	WB,1:500 - 1:2000
Reactivity:	Mouse
Host:	Rabbit
Isotype:	IgG
Clonality:	Polyclonal
Immunogen:	A synthetic peptide corresponding to a sequence within amino acids 100 to the C-terminus of human IFNA21 (NP_002166.2).
Formulation:	Buffer: PBS with 0.02% sodium azide,50% glycerol,pH7.3.
Concentration:	lot specific
Purification:	Affinity purification
Conjugation:	Unconjugated
Storage:	Store at -20°C. Avoid freeze / thaw cycles.
Stability:	Shelf life: one year from despatch.
Gene Name:	interferon, alpha 21
Database Link:	P01568
Background:	This gene is a member of the alpha interferon gene cluster on the short arm of chromosome 9. Interferons are cytokines produced in response to viral infection that mediate the immune response and interfere with viral replication. The encoded protein is a type I interferon and may play a specific role in the antiviral response to rubella virus.
Synonyms:	MGC126687; MGC126689



[View online »](#)

Product images:



Western blot analysis of extracts of mouse thymus, using IFNA21 antibody (TA377349) at 1:1000 dilution. | Secondary antibody: HRP Goat Anti-Rabbit IgG (H+L) at 1:10000 dilution. | Lysates/proteins: 25ug per lane. | Blocking buffer: 3% nonfat dry milk in TBST. | Detection: ECL Basic Kit . | Exposure time: 90s.