

## Product datasheet for **TA377346**

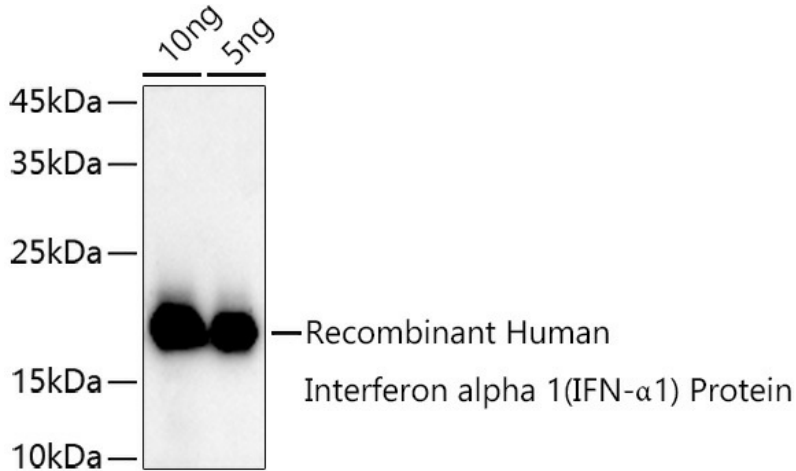
### IFNA13 (IFNA1) Rabbit Polyclonal Antibody

#### Product data:

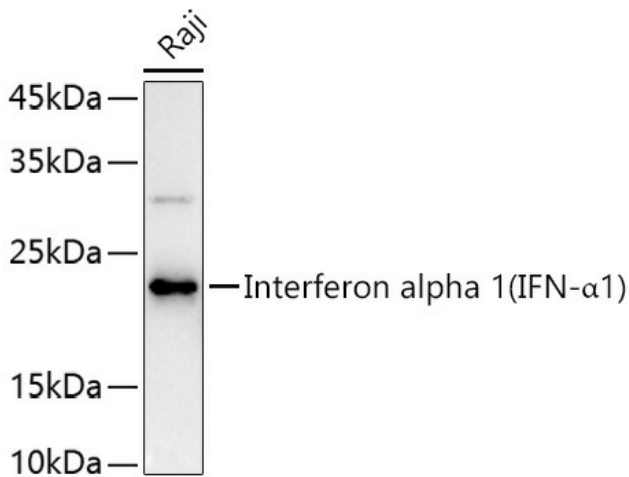
Product Type:	Primary Antibodies
Applications:	WB
Recommended Dilution:	WB,1:500 - 1:2000
Reactivity:	Human
Modifications:	Unmodified
Host:	Rabbit
Isotype:	IgG
Clonality:	Polyclonal
Immunogen:	Recombinant fusion protein containing a sequence corresponding to amino acids 25-155 of human Interferon alpha 1 (IFN- $\alpha$ 1) (NP_076918.1).
Formulation:	Buffer: PBS with 0.02% sodium azide,50% glycerol,pH7.3.
Concentration:	lot specific
Purification:	Affinity purification
Conjugation:	Unconjugated
Storage:	Store at -20°C. Avoid freeze / thaw cycles.
Stability:	Shelf life: one year from despatch.
Predicted Protein Size:	21kDa
Gene Name:	interferon, alpha 1
Database Link:	<a href="#">Entrez Gene 3439 Human P01562</a>
Background:	The protein encoded by this gene is produced by macrophages and has antiviral activity. This gene is intronless and the encoded protein is secreted.
Synonyms:	IFL; IFN; IFN-ALPHA; IFNA13; IFNA@; MGC138207; MGC138505; MGC138507



[View online »](#)

**Product images:**


Western blot analysis of extracts of Recombinant Human Interferon alpha 1 (IFN- $\alpha$ 1) Protein, using Interferon alpha 1 (IFN- $\alpha$ 1) antibody (TA377346) at 1:1000 dilution. | Secondary antibody: HRP Goat Anti-Rabbit IgG (H+L) at 1:10000 dilution. | Lysates/proteins: 25ug per lane. | Blocking buffer: 3% nonfat dry milk in TBST. | Detection: ECL Basic Kit . | Exposure time: 30s.



Western blot analysis of extracts of Raji cells, using Interferon alpha 1 (IFN- $\alpha$ 1) antibody (TA377346) at 1:1000 dilution. | Secondary antibody: HRP Goat Anti-Rabbit IgG (H+L) at 1:10000 dilution. | Lysates/proteins: 25ug per lane. | Blocking buffer: 3% nonfat dry milk in TBST. | Detection: ECL Basic Kit . | Exposure time: 180s.