

Product datasheet for **TA377342S**

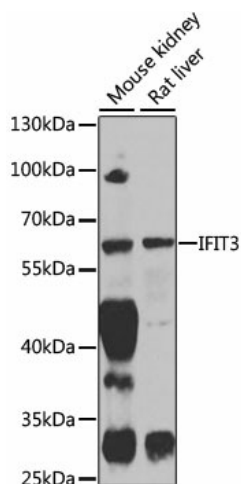
Ifit3 Rabbit Polyclonal Antibody

Product data:

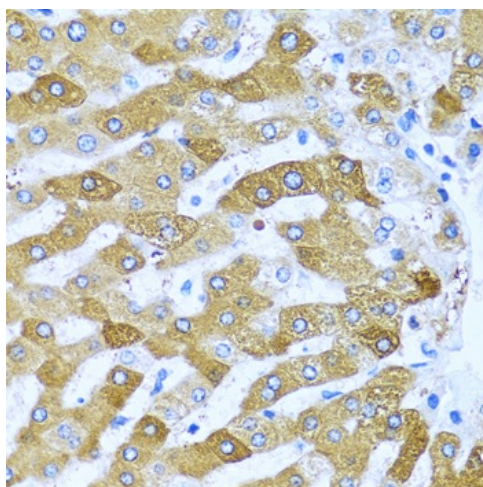
Product Type:	Primary Antibodies
Applications:	ELISA, IHC, WB
Recommended Dilution:	WB, 1:500 - 1:1000 IHC-P, 1:100 - 1:200 ELISA, Recommended starting concentration is 1 µg/mL. Please optimize the concentration based on your specific assay requirements.
Reactivity:	Human, Mouse, Rat
Modifications:	Unmodified
Host:	Rabbit
Isotype:	IgG
Clonality:	Polyclonal
Formulation:	Buffer: PBS with 0.02% sodium azide, 50% glycerol, pH 7.3.
Concentration:	lot specific
Purification:	Affinity purification
Conjugation:	Unconjugated
Storage:	Store at -20°C. Avoid freeze / thaw cycles.
Stability:	Shelf life: one year from despatch.
Predicted Protein Size:	56kDa
Gene Name:	interferon-induced protein with tetratricopeptide repeats 3
Database Link:	Entrez Gene 15959 Mouse O14879
Background:	Predicted to enable RNA binding activity and identical protein binding activity. Acts upstream of or within cellular response to interferon-beta; response to bacterium; and response to stilbenoid. Predicted to be located in mitochondrion. Predicted to be active in cytosol. Is expressed in alimentary system; eye; face; and nervous system. Orthologous to human IFIT3 (interferon induced protein with tetratricopeptide repeats 3).
Synonyms:	CIG-49; CIG49; GARG-49; IFI-60K; IFI60; IFIT-3; IFIT-4; IFIT4; IRG2; ISG-60; ISG60; RIG-G


[View online »](#)

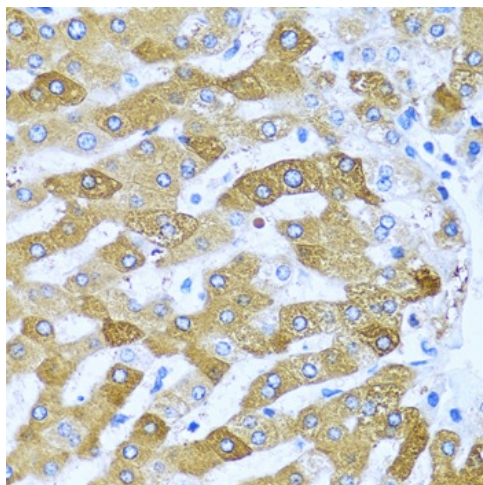
Product images:



Western blot analysis of various lysates using IFIT3 Rabbit pAb ([TA377342]) at 1:1000 dilution. Secondary antibody: HRP-conjugated Goat anti-Rabbit IgG (H+L) (AS014) at 1:10000 dilution. Lysates/proteins: 25µg per lane. Blocking buffer: 3% nonfat dry milk in TBST. Detection: ECL Enhanced Kit (RM00021). Exposure time: 60s.



Immunohistochemistry analysis of paraffin-embedded Human lung cancer using IFIT3 Rabbit pAb ([TA377342]) at dilution of 1:100 (40x lens). Microwave antigen retrieval performed with 0.01M PBS Buffer (pH 7.2) prior to IHC staining.



Immunohistochemistry analysis of paraffin-embedded Human liver using IFIT3 Rabbit pAb ([TA377342]) at dilution of 1:100 (40x lens). Microwave antigen retrieval performed with 0.01M PBS Buffer (pH 7.2) prior to IHC staining.