

Product datasheet for **TA377339S**

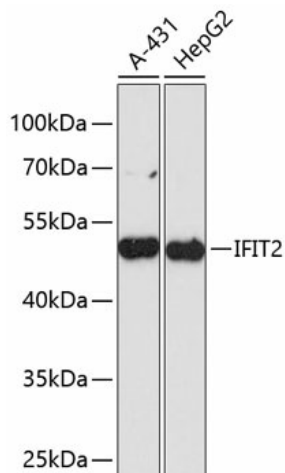
IFIT2 Rabbit Polyclonal Antibody

Product data:

Product Type:	Primary Antibodies
Applications:	ELISA, WB
Recommended Dilution:	WB, 1:500 - 1:2000 ELISA, Recommended starting concentration is 1 µg/mL. Please optimize the concentration based on your specific assay requirements.
Reactivity:	Human
Modifications:	Unmodified
Host:	Rabbit
Isotype:	IgG
Clonality:	Polyclonal
Formulation:	Buffer: PBS with 0.02% sodium azide, 50% glycerol, pH 7.3.
Concentration:	lot specific
Purification:	Affinity purification
Conjugation:	Unconjugated
Storage:	Store at -20°C. Avoid freeze / thaw cycles.
Stability:	Shelf life: one year from despatch.
Predicted Protein Size:	55kDa
Gene Name:	interferon induced protein with tetratricopeptide repeats 2
Database Link:	Entrez Gene 3433 Human P09913
Background:	Enables RNA binding activity. Involved in negative regulation of protein binding activity; positive regulation of apoptotic process; and response to virus. Located in endoplasmic reticulum.
Synonyms:	cig42; G10P2; GARG-39; IFI-54; IFI-54K; IFI54; IFIT-2; ISG-54K; ISG54


[View online »](#)

Product images:



Western blot analysis of various lysates using IFIT2 Rabbit pAb (TA377339S) at 1:3000 dilution. Secondary antibody: HRP-conjugated Goat anti-Rabbit IgG (H+L) (AS014) at 1:10000 dilution. Lysates/proteins: 25µg per lane. Blocking buffer: 3% nonfat dry milk in TBST. Detection: ECL Basic Kit (RM00020). Exposure time: 90s.