

Product datasheet for **TA377328S**

Iduronate 2 sulfatase (IDS) Rabbit Polyclonal Antibody

Product data:

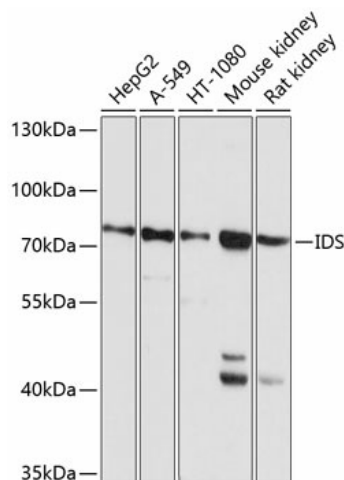
Product Type:	Primary Antibodies
Applications:	ICC/IF, IHC, WB
Recommended Dilution:	WB,1:500 - 1:2000 IHC,1:50 - 1:200 IF,1:50 - 1:200
Reactivity:	Human, Mouse, Rat
Modifications:	Unmodified
Host:	Rabbit
Isotype:	IgG
Clonality:	Polyclonal
Immunogen:	Recombinant fusion protein containing a sequence corresponding to amino acids 34-290 of human IDS (NP_006114.1).
Formulation:	Buffer: PBS with 0.02% sodium azide,50% glycerol,pH7.3.
Concentration:	lot specific
Purification:	Affinity purification
Conjugation:	Unconjugated
Storage:	Store at -20°C. Avoid freeze / thaw cycles.
Stability:	Shelf life: one year from despatch.
Predicted Protein Size:	34kDa/38kDa/61kDa
Gene Name:	iduronate 2-sulfatase
Database Link:	Entrez Gene 3423 Human P22304
Background:	This gene encodes a member of the sulfatase family of proteins. The encoded preproprotein is proteolytically processed to generate two polypeptide chains. This enzyme is involved in the lysosomal degradation of heparan sulfate and dermatan sulfate. Mutations in this gene are associated with the X-linked lysosomal storage disease mucopolysaccharidosis type II, also known as Hunter syndrome. Alternative splicing results in multiple transcript variants, at least one of which encodes a preproprotein that is proteolytically processed.



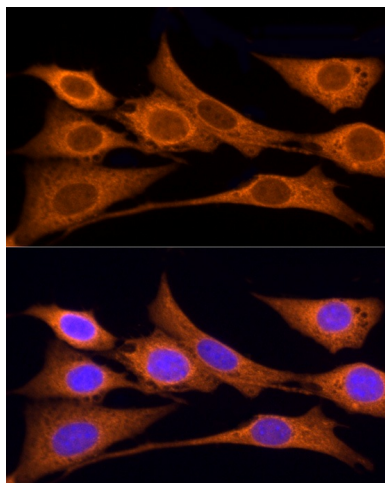
[View online »](#)

Synonyms: iduronate-2-sulfatase; idursulfase; MPS2; S; SIDS

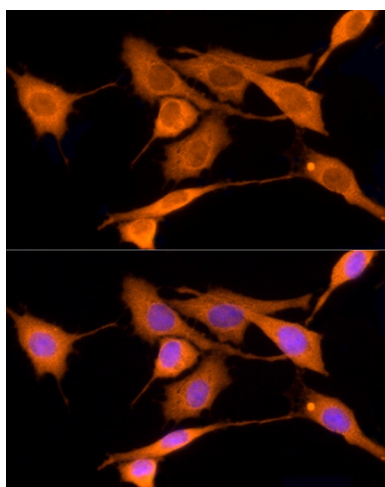
Product images:



Western blot analysis of extracts of various cell lines, using IDS antibody ([TA377328]) at 1:1000 dilution. | Secondary antibody: HRP Goat Anti-Rabbit IgG (H+L) at 1:10000 dilution. | Lysates/proteins: 25ug per lane. | Blocking buffer: 3% nonfat dry milk in TBST. | Detection: ECL Basic Kit . | Exposure time: 5s.



Immunofluorescence analysis of NIH/3T3 cells using IDS Rabbit pAb ([TA377328]) at dilution of 1:25 (40x lens). Blue: DAPI for nuclear staining.



Immunofluorescence analysis of PC-12 cells using IDS Rabbit pAb ([TA377328]) at dilution of 1:25 (40x lens). Blue: DAPI for nuclear staining.