

Product datasheet for **TA377326**

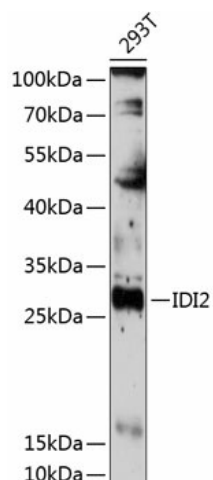
IDI2 Rabbit Polyclonal Antibody

Product data:

Product Type:	Primary Antibodies
Applications:	WB
Recommended Dilution:	WB,1:500 - 1:2000
Reactivity:	Human
Modifications:	Unmodified
Host:	Rabbit
Isotype:	IgG
Clonality:	Polyclonal
Immunogen:	Recombinant fusion protein containing a sequence corresponding to amino acids 60-180 of human IDI2 (NP_150286.1).
Formulation:	Buffer: PBS with 0.02% sodium azide,50% glycerol,pH7.3.
Concentration:	lot specific
Purification:	Affinity purification
Conjugation:	Unconjugated
Storage:	Store at -20°C. Avoid freeze / thaw cycles.
Stability:	Shelf life: one year from despatch.
Predicted Protein Size:	26kDa
Gene Name:	isopentenyl-diphosphate delta isomerase 2
Database Link:	Entrez Gene 91734 Human Q9BXS1
Background:	The protein encoded by this gene catalyzes the conversion of isopentenyl diphosphate to dimethylallyl diphosphate, which is a precursor for the synthesis of cholesterol and other isoprenoids. This gene, which is a product of an ancestral gene duplication event, encodes a protein that may be involved in the aggregation of alpha-synuclein in the cerebral cortex of patients with Lewy body disease. In addition, segmental copy number gains in this locus have been associated with sporadic amyotrophic lateral sclerosis.
Synonyms:	IPPI2



[View online »](#)

Product images:

Western blot analysis of extracts of 293T cells, using IDI2 antibody (TA377326) at 1:3000 dilution. | Secondary antibody: HRP Goat Anti-Rabbit IgG (H+L) at 1:10000 dilution. | Lysates/proteins: 25ug per lane. | Blocking buffer: 3% nonfat dry milk in TBST. | Detection: ECL Basic Kit . | Exposure time: 90s.