

Product datasheet for **TA377319S**

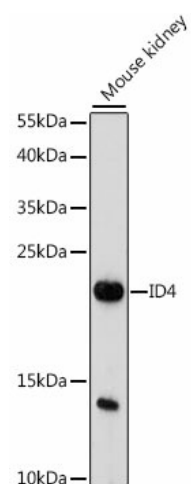
ID4 Rabbit Polyclonal Antibody

Product data:

Product Type:	Primary Antibodies
Applications:	ELISA, WB
Recommended Dilution:	WB, 1:500 - 1:2000 ELISA, Recommended starting concentration is 1 µg/mL. Please optimize the concentration based on your specific assay requirements.
Reactivity:	Mouse, Rat
Host:	Rabbit
Isotype:	IgG
Clonality:	Polyclonal
Formulation:	Buffer: PBS with 0.02% sodium azide, 50% glycerol, pH 7.3.
Concentration:	lot specific
Purification:	Affinity purification
Conjugation:	Unconjugated
Storage:	Store at -20°C. Avoid freeze / thaw cycles.
Stability:	Shelf life: one year from despatch.
Predicted Protein Size:	17kDa
Gene Name:	inhibitor of DNA binding 4, HLH protein
Database Link:	P47928
Background:	This gene encodes a member of the inhibitor of DNA binding (ID) protein family. The encoded protein lacks DNA binding ability, and instead regulates gene expression through binding to and inhibiting basic helix-loop-helix transcription factors. This protein has been implicated in the regulation of diverse cellular processes that play a role in development and tumorigenesis.
Synonyms:	bHLHb27; IDB4

[View online »](#)

Product images:



Western blot analysis of lysates from mouse kidney