

## Product datasheet for **TA377293S**

### ARFBP1 (HUWE1) Rabbit Polyclonal Antibody

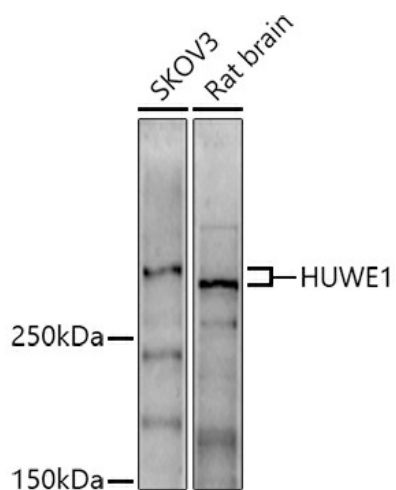
#### Product data:

Product Type:	Primary Antibodies
Applications:	WB
Recommended Dilution:	WB,1:500 - 1:2000
Reactivity:	Human, Rat
Modifications:	Unmodified
Host:	Rabbit
Isotype:	IgG
Clonality:	Polyclonal
Immunogen:	Recombinant protein of human HUWE1.
Formulation:	Buffer: PBS with 0.02% sodium azide,50% glycerol,pH7.3.
Concentration:	lot specific
Purification:	Affinity purification
Conjugation:	Unconjugated
Storage:	Store at -20°C. Avoid freeze / thaw cycles.
Stability:	Shelf life: one year from despatch.
Predicted Protein Size:	481KDa
Gene Name:	HECT, UBA and WWE domain containing 1, E3 ubiquitin protein ligase
Database Link:	<a href="#">Entrez Gene 10075 Human Q7Z6Z7</a>
Background:	This gene encodes a protein containing a C-terminal HECT (E6AP type E3 ubiquitin protein ligase) domain that functions as an E3 ubiquitin ligase. The encoded protein is required for the ubiquitination and subsequent degradation of the anti-apoptotic protein Mcl1 (myeloid cell leukemia sequence 1 (BCL2-related)). This protein also ubiquitinates the p53 tumor suppressor, core histones, and DNA polymerase beta. Mutations in this gene are associated with Turner type X-linked syndromic cognitive disability.
Synonyms:	ARF-BP1; HectH9; HSPC272; Ib772; KIAA0312; KIAA1578; LASU1; Mule; OTTHUMP00000023356; URE-B1; UREB1



[View online »](#)

## Product images:



Western blot analysis of extracts of various cell lines, using HUWE1 antibody ([TA377293]) at 1:1000 dilution. | Secondary antibody: HRP Goat Anti-Rabbit IgG (H+L) at 1:10000 dilution. | Lysates/proteins: 25ug per lane. | Blocking buffer: 3% nonfat dry milk in TBST. | Detection: ECL Basic Kit . | Exposure time: 180s.