

Product datasheet for **TA377286S**

HTRA2 Rabbit Polyclonal Antibody

Product data:

Product Type:	Primary Antibodies
Applications:	IHC, IP, WB
Recommended Dilution:	WB,1:500 - 1:2000 IHC,1:50 - 1:200 IP,1:50 - 1:100
Reactivity:	Human, Mouse, Rat
Modifications:	Unmodified
Host:	Rabbit
Isotype:	IgG
Clonality:	Polyclonal
Immunogen:	Recombinant fusion protein containing a sequence corresponding to amino acids 334-458 of human HTRA2 (NP_037379.1).
Formulation:	Buffer: PBS with 0.02% sodium azide,50% glycerol,pH7.3.
Concentration:	lot specific
Purification:	Affinity purification
Conjugation:	Unconjugated
Storage:	Store at -20°C. Avoid freeze / thaw cycles.
Stability:	Shelf life: one year from despatch.
Predicted Protein Size:	38kDa/39kDa/46kDa/48kDa
Gene Name:	HtrA serine peptidase 2
Database Link:	Entrez Gene 27429 Human O43464



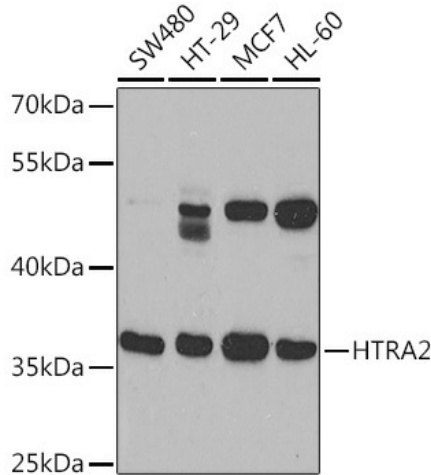
[View online »](#)

Background:

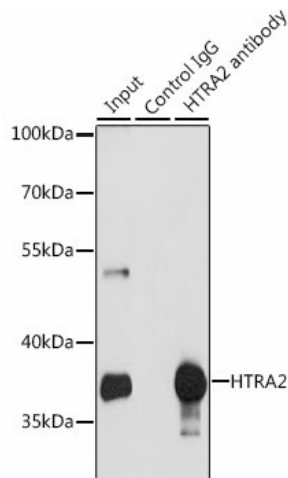
This gene encodes a serine protease. The protein has been localized in the endoplasmic reticulum and interacts with an alternatively spliced form of mitogen-activated protein kinase 14. The protein has also been localized to the mitochondria with release to the cytosol following apoptotic stimulus. The protein is thought to induce apoptosis by binding the apoptosis inhibitory protein baculoviral IAP repeat-containing 4. Nuclear localization of this protein has also been observed. Alternate splicing of this gene results in multiple transcript variants encoding different isoforms.

Synonyms:

OMI; PARK13; PRSS25

Product images:


Western blot analysis of extracts of various cell lines, using HTRA2 Rabbit pAb ([TA377286]) at 1:1000 dilution. |Secondary antibody: HRP Goat Anti-Rabbit IgG (H+L) at 1:10000 dilution. |Lysates/proteins: 25ug per lane. |Blocking buffer: 3% nonfat dry milk in TBST. |Detection: ECL Basic Kit .|



Immunoprecipitation analysis of 200ug extracts of MCF-7 cells, using 3 ug HTRA2 antibody ([TA377286]). Western blot was performed from the immunoprecipitate using HTRA2 antibody ([TA377286]) at a dilution of 1:1000.