

## Product datasheet for **TA377273S**

### **TIP30 (HTATIP2) Rabbit Polyclonal Antibody**

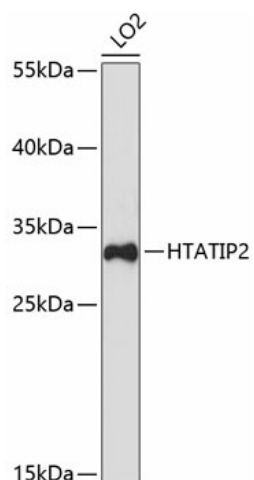
#### **Product data:**

|                         |   |
|-------------------------|---|
| Product Type:           | Primary Antibodies  |
| Applications:           | ELISA, WB   |
| Recommended Dilution:   | WB, 1:500 - 1:2000<br>ELISA, Recommended starting concentration is 1 µg/mL. Please optimize the concentration based on your specific assay requirements.  |
| Reactivity:             | Human   |
| Modifications:          | Unmodified  |
| Host:                   | Rabbit  |
| Isotype:                | IgG   |
| Clonality:              | Polyclonal  |
| Formulation:            | Buffer: PBS with 0.02% sodium azide, 50% glycerol, pH 7.3.  |
| Concentration:          | lot specific  |
| Purification:           | Affinity purification   |
| Conjugation:            | Unconjugated  |
| Storage:                | Store at -20°C. Avoid freeze / thaw cycles.   |
| Stability:              | Shelf life: one year from despatch.   |
| Predicted Protein Size: | 27kDa   |
| Gene Name:              | HIV-1 Tat interactive protein 2   |
| Database Link:          | <a href="#">Entrez Gene 10553 Human Q9BUP3</a>  |
| Background:             | Enables protein serine/threonine kinase activity. Involved in import into nucleus and regulation of angiogenesis. Acts upstream of or within positive regulation of programmed cell death; positive regulation of transcription by RNA polymerase II; and protein autophosphorylation. Located in cytosol and nuclear envelope. |
| Synonyms:               | CC3; FLJ26963; SDR44U1; TIP30   |



[View online »](#)

## Product images:



Western blot analysis of lysates from LO2 cells