

## Product datasheet for **TA377267**

### Hsp20 (HSPB6) Rabbit Polyclonal Antibody

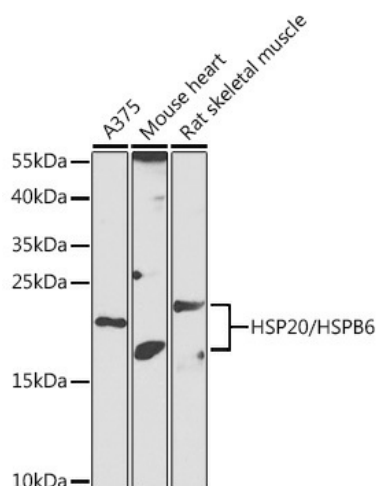
#### Product data:

Product Type:	Primary Antibodies
Applications:	WB
Recommended Dilution:	WB,1:500 - 1:2000
Reactivity:	Human, Mouse, Rat
Modifications:	Unmodified
Host:	Rabbit
Isotype:	IgG
Clonality:	Polyclonal
Immunogen:	Recombinant fusion protein containing a sequence corresponding to amino acids 1-160 of human HSP20/HSP20/HSPB6 (NP_653218.1).
Formulation:	Buffer: PBS with 0.02% sodium azide,50% glycerol,pH7.3.
Concentration:	lot specific
Purification:	Affinity purification
Conjugation:	Unconjugated
Storage:	Store at -20°C. Avoid freeze / thaw cycles.
Stability:	Shelf life: one year from despatch.
Predicted Protein Size:	17kDa
Gene Name:	heat shock protein family B (small) member 6
Database Link:	<a href="#">Entrez Gene 126393 Human O14558</a>
Background:	This locus encodes a heat shock protein. The encoded protein likely plays a role in smooth muscle relaxation.
Synonyms:	FLJ32389; Hsp20



[View online »](#)

## Product images:



Western blot analysis of extracts of various cell lines, using HSP20/HSP20/HSPB6 antibody (TA377267) at 1:1000 dilution. | Secondary antibody: HRP Goat Anti-Rabbit IgG (H+L) at 1:10000 dilution. | Lysates/proteins: 25ug per lane. | Blocking buffer: 3% nonfat dry milk in TBST. | Detection: ECL Enhanced Kit. | Exposure time: 90s.