

## Product datasheet for **TA377263**

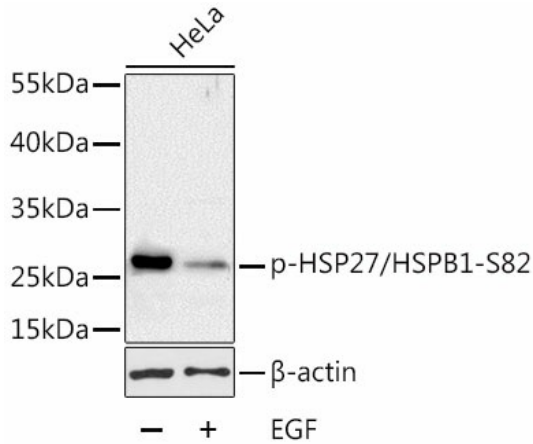
### HSP27 (HSPB1) Rabbit Polyclonal Antibody

#### Product data:

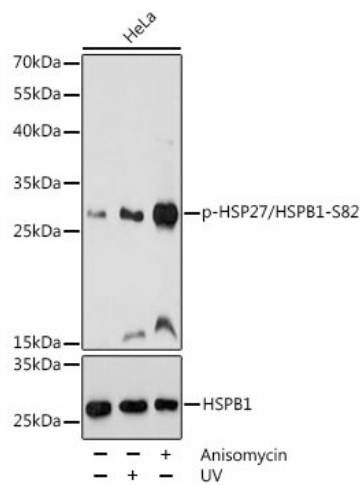
Product Type:	Primary Antibodies
Applications:	IHC, IP, WB
Recommended Dilution:	WB,1:500 - 1:2000 IHC,1:50 - 1:200 IP,1:50 - 1:100
Reactivity:	Human
Modifications:	Phospho S82
Host:	Rabbit
Isotype:	IgG
Clonality:	Polyclonal
Immunogen:	A synthetic phosphorylated peptide around S82 of human HSP27/HSPB1 (NP_001531.1).
Formulation:	PBS with 0.09% Sodium azide,50% glycerol,pH7.3.
Concentration:	lot specific
Purification:	Affinity purification
Conjugation:	Unconjugated
Storage:	Store at -20°C. Avoid freeze / thaw cycles.
Stability:	Shelf life: one year from despatch.
Predicted Protein Size:	22kDa
Gene Name:	heat shock protein family B (small) member 1
Database Link:	<a href="#">Entrez Gene 3315 Human P04792</a>
Background:	The protein encoded by this gene is induced by environmental stress and developmental changes. The encoded protein is involved in stress resistance and actin organization and translocates from the cytoplasm to the nucleus upon stress induction. Defects in this gene are a cause of Charcot-Marie-Tooth disease type 2F (CMT2F) and distal hereditary motor neuropathy (dHMN).
Synonyms:	CMT2F; DKFZp586P1322; HMN2B; HS.76067; Hsp25; HSP27; HSP28; SRP27



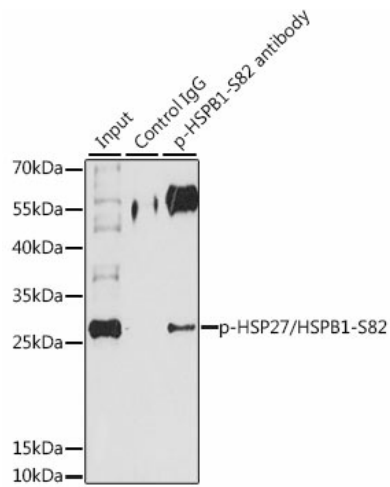
[View online »](#)

**Product images:**


Western blot analysis of extracts of HeLa cells, using Phospho-HSP27/HSPB1-S82 antibody (TA377263) at 1:1000 dilution. HeLa cells were treated by EGF (100ng/mL) for 30 minutes after serum-starvation overnight. | Secondary antibody: HRP Goat Anti-Rabbit IgG (H+L) at 1:10000 dilution. | Lysates/proteins: 25ug per lane. | Blocking buffer: 3% BSA. | Detection: ECL Basic Kit. | Exposure time: 1min.



Western blot analysis of extracts of HeLa cells, using Phospho-HSP27/HSPB1-S82 pAb (TA377263) at 1:1000 dilution or HSP27/HSPB1 antibody (A16332). HeLa cells were treated by UV at room temperature for 15-30 minutes. HeLa cells were treated by Anisomycin (25 ug/mL) at 37°C for 30 minutes after serum-starvation overnight. | Secondary antibody: HRP Goat Anti-Rabbit IgG (H+L) at 1:10000 dilution. | Lysates/proteins: 25ug per lane. | Blocking buffer: 3% BSA. | Detection: ECL Basic Kit. | Exposure time: 10s.



Immunoprecipitation analysis of 200ug extracts of HeLa cells, using 3 ug Phospho-HSP27/HSPB1-S82 pAb (TA377263). Western blot was performed from the immunoprecipitate using Phospho-HSP27/HSPB1-S82 pAb (TA377263) at a dilution of 1:1000. HeLa cells were treated by EGF (100 ng/mL) at 37°C for 30 minutes after serum-starvation overnight.