

## Product datasheet for **TA377242S**

### HSF1 Rabbit Polyclonal Antibody

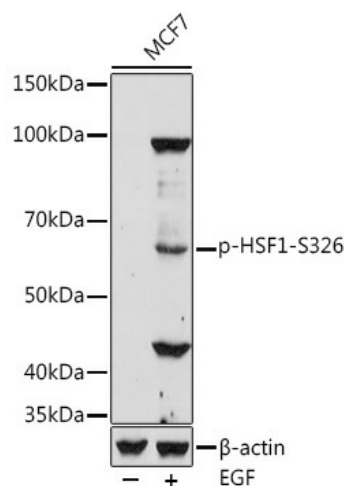
#### Product data:

Product Type:	Primary Antibodies
Applications:	WB
Recommended Dilution:	WB,1:500 - 1:2000
Reactivity:	Human
Modifications:	Phospho S326
Host:	Rabbit
Isotype:	IgG
Clonality:	Polyclonal
Immunogen:	A phospho specific peptide corresponding to residues surrounding S326 of human HSF1
Formulation:	Buffer: PBS with 0.02% sodium azide,1% BSA,50% glycerol,pH7.3.
Concentration:	lot specific
Purification:	Affinity purification
Conjugation:	Unconjugated
Storage:	Store at -20°C. Avoid freeze / thaw cycles. Avoid freeze / thaw cycles.   Buffer: PBS with 0.02% sodium azide,1% BSA,50% glycerol,pH7.3.
Stability:	Shelf life: one year from despatch.
Predicted Protein Size:	82kDa
Gene Name:	heat shock transcription factor 1
Database Link:	<a href="#">Entrez Gene 3297 Human Q00613</a>
Background:	The product of this gene is a transcription factor that is rapidly induced after temperature stress and binds heat shock promoter elements (HSE). This protein plays a role in the regulation of lifespan. Expression of this gene is repressed by phosphorylation, which promotes binding by heat shock protein 90. [provided by RefSeq, Aug 2016]
Synonyms:	HSTF1



[View online »](#)

## Product images:



Western blot analysis of extracts of MCF7 cells, using Phospho-HSF1-S326 antibody ([TA377242]) at 1:500 dilution. MCF7 cells were treated by EGF (100 ng/ml) at 37°C for 30 minutes after serum-starvation overnight. | Secondary antibody: HRP Goat Anti-Rabbit IgG (H+L) at 1:10000 dilution. | Lysates/proteins: 25ug per lane. | Blocking buffer: 3% nonfat dry milk in TBST. | Detection: ECL Basic Kit. | Exposure time: 180s.