

Product datasheet for **TA377234S**

HSD17B13 Rabbit Polyclonal Antibody

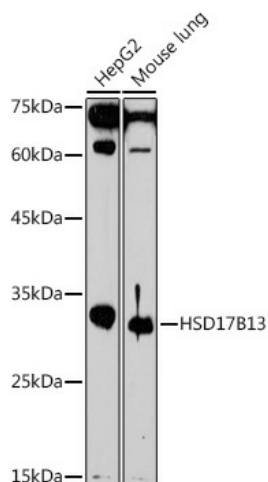
Product data:

Product Type:	Primary Antibodies
Applications:	ELISA, ICC/IF, IHC, WB
Recommended Dilution:	WB, 1:500 - 1:1000 IHC-P, 1:50 - 1:200 IF/ICC, 1:50 - 1:200 ELISA, Recommended starting concentration is 1 µg/mL. Please optimize the concentration based on your specific assay requirements.
Reactivity:	Human, Mouse, Rat
Modifications:	Unmodified
Host:	Rabbit
Isotype:	IgG
Clonality:	Polyclonal
Formulation:	Buffer: PBS with 0.02% sodium azide, 50% glycerol, pH 7.3.
Concentration:	lot specific
Purification:	Affinity purification
Conjugation:	Unconjugated
Storage:	Store at -20°C. Avoid freeze / thaw cycles.
Stability:	Shelf life: one year from despatch.
Predicted Protein Size:	34kDa
Gene Name:	hydroxysteroid (17-beta) dehydrogenase 13
Database Link:	Entrez Gene 345275 Human Q7Z5P4
Background:	Predicted to enable oxidoreductase activity, acting on the CH-OH group of donors, NAD or NADP as acceptor and steroid dehydrogenase activity. Acts upstream of or within positive regulation of lipid biosynthetic process. Located in lipid droplet.
Synonyms:	HMFN0376; MGC138508; MGC138510; NIIL497; SCDR9; SDR16C3



[View online »](#)

Product images:



Western blot analysis of various lysates using HSD17B13 Rabbit pAb ([TA377234]) at 1:1000 dilution.

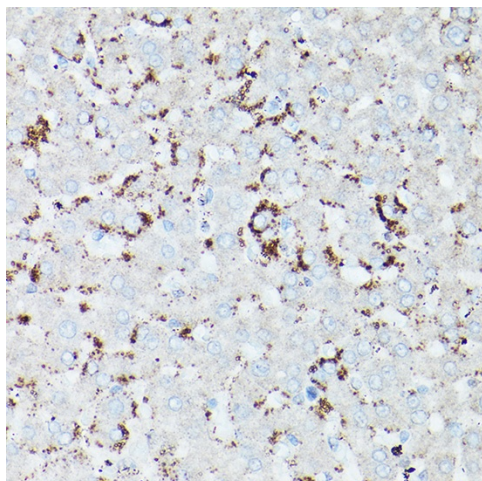
Secondary antibody: HRP-conjugated Goat anti-Rabbit IgG (H+L) (AS014) at 1:10000 dilution.

Lysates/proteins: 25µg per lane.

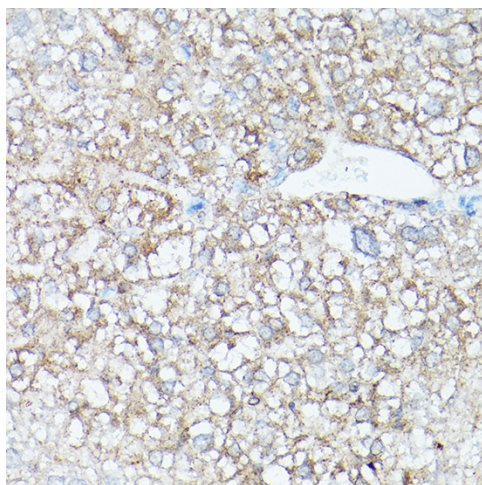
Blocking buffer: 3% nonfat dry milk in TBST.

Detection: ECL Basic Kit (RM00020).

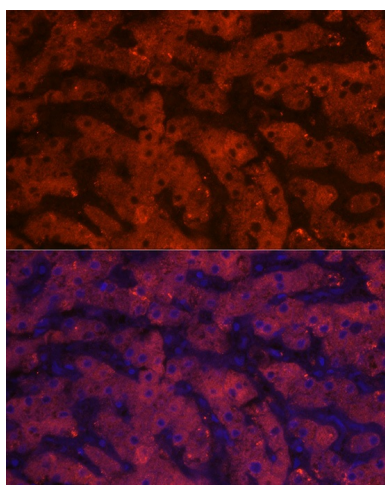
Exposure time: 180s.



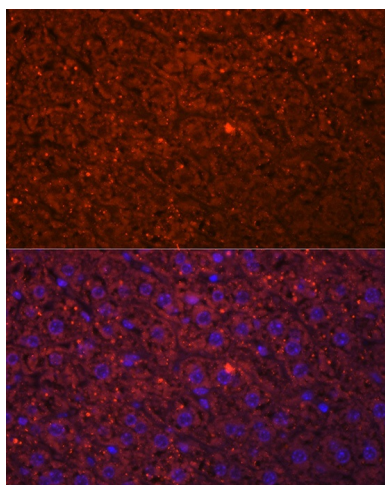
Immunohistochemistry analysis of paraffin-embedded Human liver cancer using HSD17B13 Rabbit pAb ([TA377234]) at dilution of 1:100 (40x lens). High pressure antigen retrieval performed with 0.01M Citrate Bufferr (pH 6.0) prior to IHC staining.



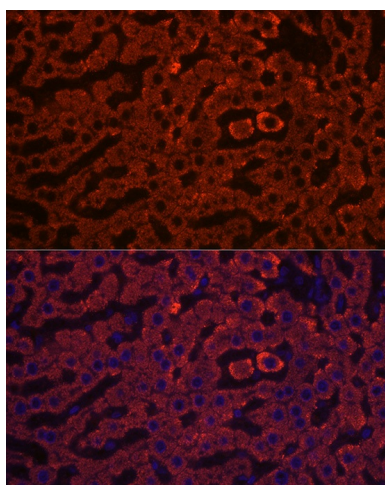
Immunohistochemistry analysis of paraffin-embedded Human liver using HSD17B13 Rabbit pAb ([TA377234]) at dilution of 1:100 (40x lens). High pressure antigen retrieval performed with 0.01M Citrate Bufferr (pH 6.0) prior to IHC staining.



Immunofluorescence analysis of paraffin-embedded human liver using HSD17B13 Rabbit pAb ([TA377234]) at dilution of 1:20 (40x lens). Secondary antibody: Cy3-conjugated Goat anti-Rabbit IgG (H+L) (AS007) at 1:500 dilution. Blue: DAPI for nuclear staining.



Immunofluorescence analysis of paraffin-embedded mouse liver using HSD17B13 Rabbit pAb ([TA377234]) at dilution of 1:20 (40x lens). Secondary antibody: Cy3-conjugated Goat anti-Rabbit IgG (H+L) (AS007) at 1:500 dilution. Blue: DAPI for nuclear staining.



Immunofluorescence analysis of paraffin-embedded rat liver using HSD17B13 Rabbit pAb ([TA377234]) at dilution of 1:20 (40x lens). Secondary antibody: Cy3-conjugated Goat anti-Rabbit IgG (H+L) (AS007) at 1:500 dilution. Blue: DAPI for nuclear staining.