

## Product datasheet for **TA377227S**

### HS6ST1 Rabbit Polyclonal Antibody

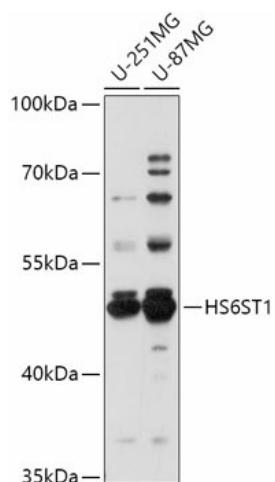
#### Product data:

|                       |  |
|-----------------------|--|
| Product Type:         | Primary Antibodies   |
| Applications:         | WB   |
| Recommended Dilution: | WB,1:500 - 1:2000  |
| Reactivity:           | Human  |
| Modifications:        | Unmodified   |
| Host:                 | Rabbit   |
| Isotype:              | IgG  |
| Clonality:            | Polyclonal   |
| Immunogen:            | Recombinant fusion protein containing a sequence corresponding to amino acids 302-411 of human HS6ST1 (NP_004798.3).   |
| Formulation:          | Buffer: PBS with 0.02% sodium azide,50% glycerol,pH7.3.  |
| Concentration:        | lot specific   |
| Purification:         | Affinity purification  |
| Conjugation:          | Unconjugated   |
| Storage:              | Store at -20°C. Avoid freeze / thaw cycles.  |
| Stability:            | Shelf life: one year from despatch.  |
| Gene Name:            | heparan sulfate 6-O-sulfotransferase 1   |
| Database Link:        | <a href="#">Entrez Gene 9394 Human O60243</a>  |
| Background:           | The protein encoded by this gene is a member of the heparan sulfate biosynthetic enzyme family. Heparan sulfate biosynthetic enzymes are key components in generating a myriad of distinct heparan sulfate fine structures that carry out multiple biological activities. This enzyme is a type II integral membrane protein and is responsible for 6-O-sulfation of heparan sulfate. This enzyme does not share significant sequence similarity with other known sulfotransferases. A pseudogene located on chromosome 1 has been found for this gene. [provided by RefSeq, Jul 2008] |
| Synonyms:             | DKFZp547H098; FLJ25392; HS6ST; HS6ST-1; MGC116899; MGC116901   |



[View online »](#)

## Product images:



Western blot analysis of extracts of various cell lines, using HS6ST1 antibody ([TA377227]) at 1:1000 dilution. | Secondary antibody: HRP Goat Anti-Rabbit IgG (H+L) at 1:10000 dilution. | Lysates/proteins: 25ug per lane. | Blocking buffer: 3% nonfat dry milk in TBST. | Detection: ECL Basic Kit . | Exposure time: 180s.