

## Product datasheet for **TA377155S**

### **HNF4 gamma (HNF4G) Rabbit Polyclonal Antibody**

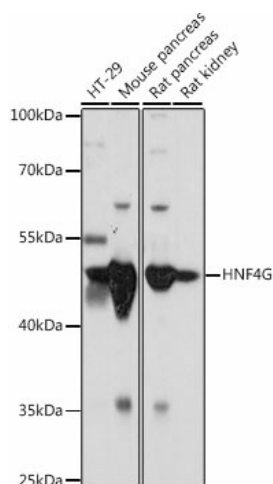
#### **Product data:**

|                         |   |
|-------------------------|---|
| Product Type:           | Primary Antibodies  |
| Applications:           | ELISA, ICC/IF, WB   |
| Recommended Dilution:   | WB, 1:1000 - 1:5000<br>IF/ICC, 1:50 - 1:100<br>ELISA, Recommended starting concentration is 1 µg/mL. Please optimize the concentration based on your specific assay requirements.   |
| Reactivity:             | Human, Mouse, Rat   |
| Modifications:          | Unmodified  |
| Host:                   | Rabbit  |
| Isotype:                | IgG   |
| Clonality:              | Polyclonal  |
| Formulation:            | PBS with 0.05% proclin300, 50% glycerol, pH7.3.   |
| Concentration:          | lot specific  |
| Purification:           | Affinity purification   |
| Conjugation:            | Unconjugated  |
| Storage:                | Store at -20°C. Avoid freeze / thaw cycles.   |
| Stability:              | Shelf life: one year from despatch.   |
| Predicted Protein Size: | 46kDa   |
| Gene Name:              | hepatocyte nuclear factor 4 gamma   |
| Database Link:          | <a href="#">Entrez Gene 3174 Human Q14541</a>   |
| Background:             | Enables DNA-binding transcription activator activity, RNA polymerase II-specific and RNA polymerase II cis-regulatory region sequence-specific DNA binding activity. Involved in positive regulation of transcription by RNA polymerase II. Located in several cellular components, including intercellular bridge; mitotic spindle; and nucleoplasm. |
| Synonyms:               | HNF-4-gamma; NR2A2; NR2A3   |

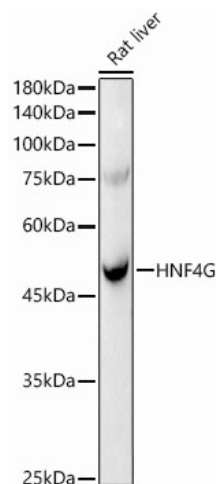


[View online »](#)

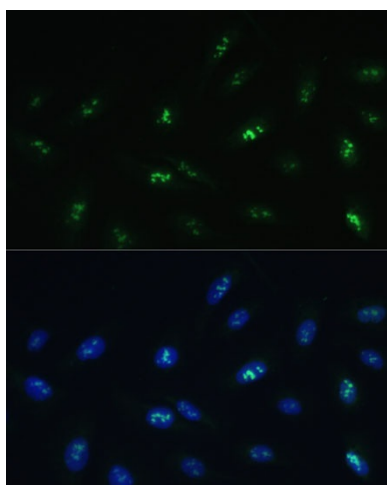
## Product images:



Western blot analysis of lysates from Mouse large intestine



Western blot analysis of lysates from Rat liver



Immunofluorescence analysis of U-2 OS cells using HNF4G Rabbit pAb ([TA377155]) at dilution of 1:100 (40x lens). Secondary antibody: Cy3-conjugated Goat anti-Rabbit IgG (H+L) (AS007) at 1:500 dilution. Blue: DAPI for nuclear staining.