

## Product datasheet for TA377150S

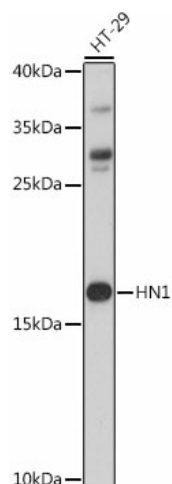
### JPT1 Rabbit Polyclonal Antibody

#### Product data:

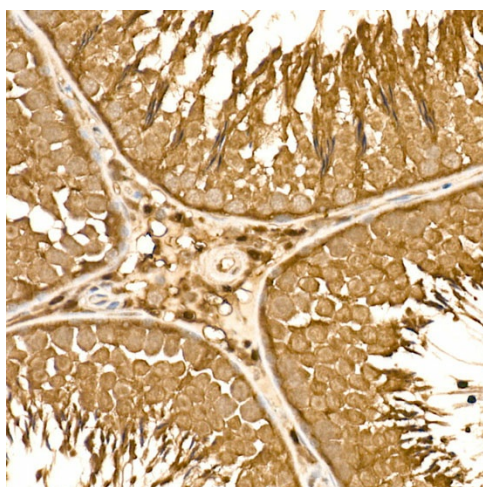
Product Type:	Primary Antibodies
Applications:	ELISA, IHC, WB
Recommended Dilution:	WB, 1:500 - 1:2000 IHC-P, 1:50 - 1:200 ELISA, Recommended starting concentration is 1 µg/mL. Please optimize the concentration based on your specific assay requirements.
Reactivity:	Human, Mouse, Rat
Modifications:	Unmodified
Host:	Rabbit
Isotype:	IgG
Clonality:	Polyclonal
Formulation:	Buffer: PBS with 0.02% sodium azide, 50% glycerol, pH 7.3.
Concentration:	lot specific
Purification:	Affinity purification
Conjugation:	Unconjugated
Storage:	Store at -20°C. Avoid freeze / thaw cycles.
Stability:	Shelf life: one year from despatch.
Predicted Protein Size:	16kDa
Gene Name:	hematological and neurological expressed 1
Database Link:	<a href="#">Entrez Gene 51155 Human Q9UK76</a>
Background:	Located in nuclear membrane; nucleolus; and nucleoplasm.
Synonyms:	ARM2; HN1A


[View online »](#)

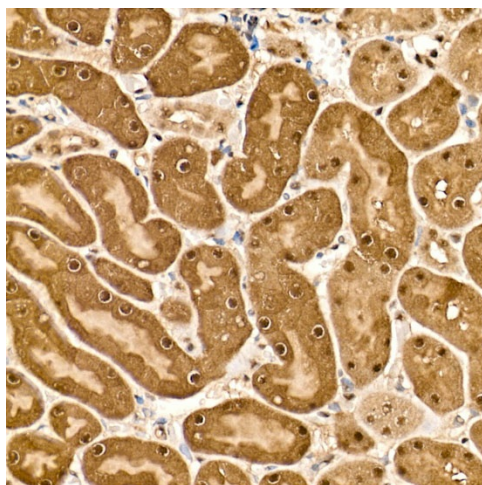
## Product images:



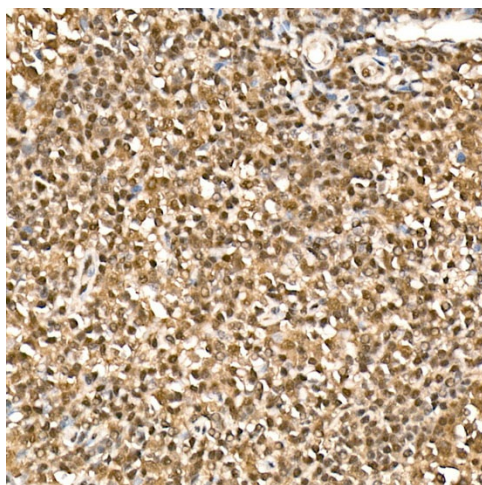
Western blot analysis of lysates from HT-29 cells



Immunohistochemistry analysis of paraffin-embedded Rat testis using HN1 Rabbit pAb ([TA377150]) at dilution of 1:150 (20x lens). High pressure antigen retrieval performed with 0.01M Citrate Bufferr (pH 6.0) prior to IHC staining.



Immunohistochemistry analysis of paraffin-embedded Mouse kidney using HN1 Rabbit pAb ([TA377150]) at dilution of 1:150 (20x lens). High pressure antigen retrieval performed with 0.01M Citrate Bufferr (pH 6.0) prior to IHC staining.



Immunohistochemistry analysis of paraffin-embedded Human tonsil using HN1 Rabbit pAb ([TA377150]) at dilution of 1:150 (20x lens). High pressure antigen retrieval performed with 0.01M Citrate Bufferr (pH 6.0) prior to IHC staining.