

## Product datasheet for **TA377150**

### JPT1 Rabbit Polyclonal Antibody

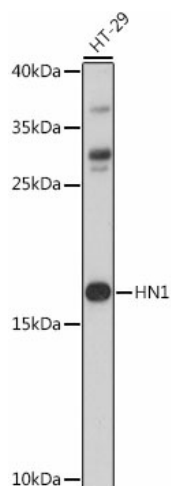
#### Product data:

Product Type:	Primary Antibodies
Applications:	IHC, WB
Recommended Dilution:	WB, 1:500 - 1:2000
Reactivity:	Human, Mouse, Rat
Modifications:	Unmodified
Host:	Rabbit
Isotype:	IgG
Clonality:	Polyclonal
Immunogen:	Recombinant fusion protein containing a sequence corresponding to amino acids 1-154 of human HN1 (NP_057269.1).
Formulation:	Buffer: PBS with 0.02% sodium azide, 50% glycerol, pH 7.3.
Concentration:	lot specific
Purification:	Affinity purification
Conjugation:	Unconjugated
Storage:	Store at -20°C. Avoid freeze / thaw cycles.
Stability:	Shelf life: one year from despatch.
Predicted Protein Size:	11kDa/16kDa/19kDa
Gene Name:	hematological and neurological expressed 1
Database Link:	<a href="#">Entrez Gene 51155 Human Q9UK76</a>
Background:	Modulates negatively AKT-mediated GSK3B signaling. Induces CTNNB1 'Ser-33' phosphorylation and degradation through the suppression of the inhibitory 'Ser-9' phosphorylation of GSK3B, which represses the function of the APC:CTNNB1:GSK3B complex and the interaction with CDH1/E-cadherin in adherent junctions. Plays a role in the regulation of cell cycle and cell adhesion. Has an inhibitory role on AR-signaling pathway through the induction of receptor proteosomal degradation.
Synonyms:	ARM2; HN1A



[View online »](#)

## Product images:



Western blot analysis of extracts of HT-29 cells, using HN1 antibody (TA377150) at 1:1000 dilution. | Secondary antibody: HRP Goat Anti-Rabbit IgG (H+L) at 1:10000 dilution. | Lysates/proteins: 25ug per lane. | Blocking buffer: 3% nonfat dry milk in TBST. | Detection: ECL Basic Kit . | Exposure time: 1s.