

Product datasheet for **TA377146**

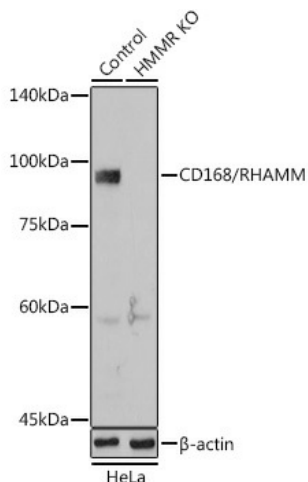
CD168 (HMMR) Rabbit Polyclonal Antibody

Product data:

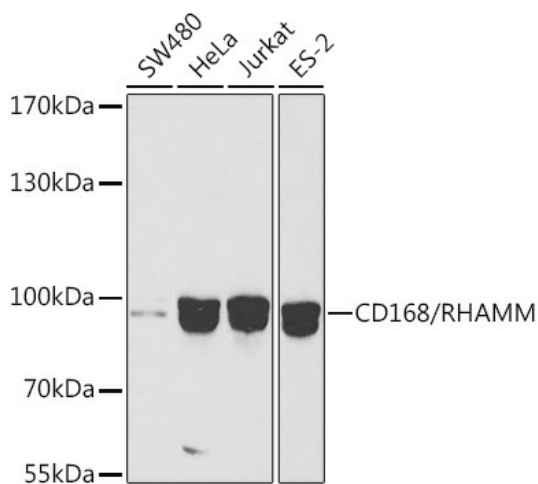
Product Type:	Primary Antibodies
Applications:	ICC/IF, WB
Recommended Dilution:	WB,1:500 - 1:2000 IF,1:50 - 1:200
Reactivity:	Human
Modifications:	Unmodified
Host:	Rabbit
Isotype:	IgG
Clonality:	Polyclonal
Immunogen:	Recombinant fusion protein containing a sequence corresponding to amino acids 1-300 of human CD168/RHAMM (NP_001136028.1).
Formulation:	Buffer: PBS with 0.02% sodium azide,50% glycerol,pH7.3.
Concentration:	lot specific
Purification:	Affinity purification
Conjugation:	Unconjugated
Storage:	Store at -20°C. Avoid freeze / thaw cycles.
Stability:	Shelf life: one year from despatch.
Predicted Protein Size:	74kDa/82kDa/84kDa
Gene Name:	hyaluronan mediated motility receptor
Database Link:	Entrez Gene 3161 Human O75330
Background:	The protein encoded by this gene is involved in cell motility. It is expressed in breast tissue and together with other proteins, it forms a complex with BRCA1 and BRCA2, thus is potentially associated with higher risk of breast cancer. Alternatively spliced transcript variants encoding different isoforms have been noted for this gene.
Synonyms:	CD168; IHABP; MGC119494; MGC119495; RHAMM



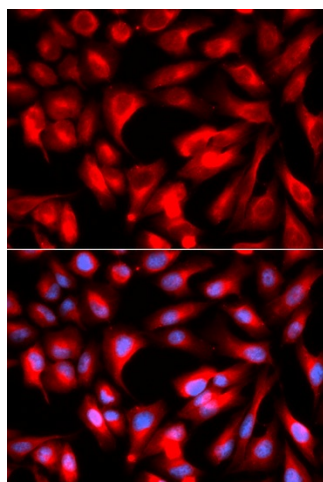
[View online »](#)

Product images:


Western blot analysis of extracts from normal (control) and CD168/RHAMM Rabbit pAb knockout (KO) HeLa cells, using CD168/RHAMM Rabbit pAb antibody (TA377146) at 1:1000 dilution. | Secondary antibody: HRP Goat Anti-Rabbit IgG (H+L) at 1:10000 dilution. | Lysates/proteins: 25ug per lane. | Blocking buffer: 3% nonfat dry milk in TBST. | Detection: ECL Basic Kit. | Exposure time: 10s.



Western blot analysis of extracts of various cell lines, using CD168/RHAMM antibody (TA377146) at 1:1000 dilution. | Secondary antibody: HRP Goat Anti-Rabbit IgG (H+L) at 1:10000 dilution. | Lysates/proteins: 25ug per lane. | Blocking buffer: 3% nonfat dry milk in TBST.



Immunofluorescence analysis of U2OS cells using CD168/RHAMM antibody (TA377146). Blue: DAPI for nuclear staining.

