

## Product datasheet for **TA377128S**

### HMG20A Rabbit Polyclonal Antibody

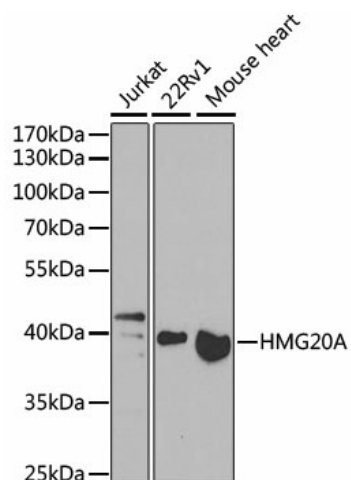
#### Product data:

Product Type:	Primary Antibodies
Applications:	ELISA, ICC/IF, WB
Recommended Dilution:	WB, 1:100 - 1:500 IF/ICC, 1:50 - 1:100 ELISA, Recommended starting concentration is 1 µg/mL. Please optimize the concentration based on your specific assay requirements.
Reactivity:	Human, Mouse, Rat
Modifications:	Unmodified
Host:	Rabbit
Isotype:	IgG
Clonality:	Polyclonal
Formulation:	Buffer: PBS with 0.02% sodium azide, 50% glycerol, pH 7.3.
Concentration:	lot specific
Purification:	Affinity purification
Conjugation:	Unconjugated
Storage:	Store at -20°C. Avoid freeze / thaw cycles.
Stability:	Shelf life: one year from despatch.
Predicted Protein Size:	40kDa
Gene Name:	high mobility group 20A
Database Link:	<a href="#">Entrez Gene 10363 Human Q9NP66</a>
Background:	Enables identical protein binding activity. Predicted to be involved in regulation of gene expression. Predicted to act upstream of or within negative regulation of neuron differentiation; negative regulation of protein sumoylation; and negative regulation of transcription by RNA polymerase II. Predicted to be active in nucleus.
Synonyms:	FLJ10739; HMGX1; HMGXB1

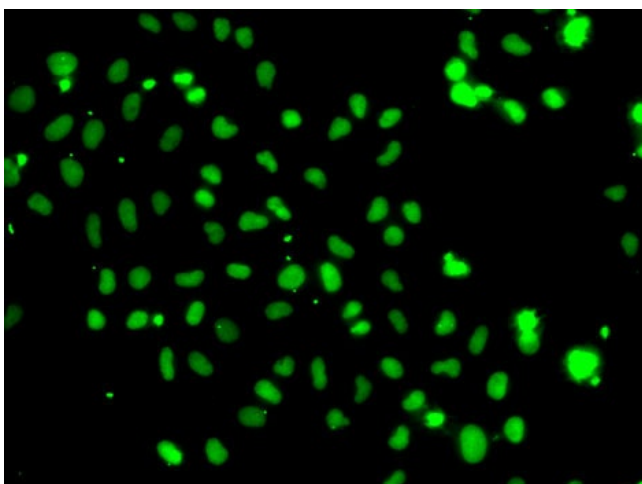


[View online »](#)

## Product images:



Western blot analysis of various lysates



Immunofluorescence analysis of A-549 cells using HMG20A Rabbit pAb ([TA377128]).Secondary antibody: Cy3-conjugated Goat anti-Rabbit IgG (H+L) (AS007) at 1:500 dilution.