

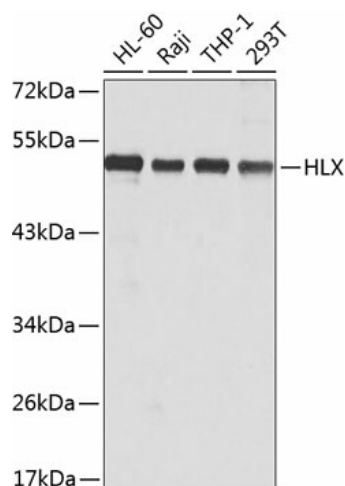
Product datasheet for **TA377127S**

HLX1 (HLX) Rabbit Polyclonal Antibody

Product data:

Product Type:	Primary Antibodies
Applications:	ELISA, WB
Recommended Dilution:	WB, 1:500 - 1:2000 ELISA, Recommended starting concentration is 1 µg/mL. Please optimize the concentration based on your specific assay requirements.
Reactivity:	Human
Modifications:	Unmodified
Host:	Rabbit
Isotype:	IgG
Clonality:	Polyclonal
Formulation:	Buffer: PBS with 0.02% sodium azide, 50% glycerol, pH 7.3.
Concentration:	lot specific
Purification:	Affinity purification
Conjugation:	Unconjugated
Storage:	Store at -20°C. Avoid freeze / thaw cycles.
Stability:	Shelf life: one year from despatch.
Predicted Protein Size:	51kDa
Gene Name:	H2.0 like homeobox
Database Link:	Entrez Gene 3142 Human Q14774
Background:	Enables sequence-specific DNA binding activity. Predicted to be involved in cell differentiation and regulation of transcription by RNA polymerase II. Predicted to act upstream of or within several processes, including animal organ development; enteric nervous system development; and regulation of T-helper cell differentiation. Predicted to be located in nucleus. Predicted to be part of chromatin.
Synonyms:	HB24; HLX1; homeobox

[View online »](#)

Product images:


Western blot analysis of various lysates using HLX Rabbit pAb (TA377127) at 1:1000 dilution.
 Secondary antibody: HRP-conjugated Goat anti-Rabbit IgG (H+L) (AS014) at 1:10000 dilution.
 Lysates/proteins: 25µg per lane.
 Blocking buffer: 3% nonfat dry milk in TBST.
 Detection: ECL Basic Kit (RM00020).
 Exposure time: 30s.