

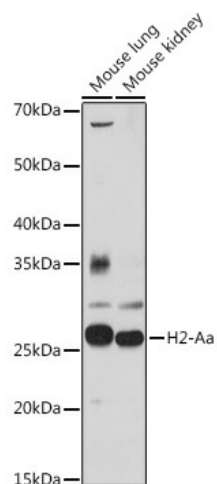
Product datasheet for **TA377108S**

H2-Aa Rabbit Polyclonal Antibody

Product data:

Product Type:	Primary Antibodies
Applications:	ELISA, WB
Recommended Dilution:	WB, 1:500 - 1:1000 ELISA, Recommended starting concentration is 1 µg/mL. Please optimize the concentration based on your specific assay requirements.
Reactivity:	Human, Mouse
Host:	Rabbit
Isotype:	IgG
Clonality:	Polyclonal
Formulation:	Buffer: PBS with 0.02% sodium azide, 50% glycerol, pH 7.3.
Concentration:	lot specific
Purification:	Affinity purification
Conjugation:	Unconjugated
Storage:	Store at -20°C. Avoid freeze / thaw cycles.
Stability:	Shelf life: one year from despatch.
Predicted Protein Size:	28kDa
Gene Name:	histocompatibility 2, class II antigen A, alpha
Database Link:	Entrez Gene 14960 Mouse P14434
Background:	Enables peptide antigen binding activity. Involved in response to interferon-gamma. Acts upstream of or within antigen processing and presentation of exogenous peptide antigen via MHC class II and positive regulation of T cell differentiation. Located in external side of plasma membrane and lysosome. Part of MHC class II protein complex. Is expressed in central nervous system; retina; and thymus primordium. Human ortholog(s) of this gene implicated in several diseases, including autoimmune disease (multiple); gastrointestinal system cancer (multiple); glomerulonephritis (multiple); hematologic cancer (multiple); and systemic sclerosis (multiple). Orthologous to several human genes including HLA-DQA1 (major histocompatibility complex, class II, DQ alpha 1).

[View online »](#)

Product images:

Western blot analysis of various lysates using H2-Aa Rabbit pAb ([TA377108]) at 1:1000 dilution.
Secondary antibody: HRP-conjugated Goat anti-Rabbit IgG (H+L) at 1:10000 dilution.
Lysates/proteins: 25µg per lane.
Blocking buffer: 3% nonfat dry milk in TBST.
Detection: ECL Basic Kit .
Exposure time: 60s.