

## Product datasheet for **TA377072**

### H3FT (HIST3H3) Rabbit Polyclonal Antibody

#### Product data:

Product Type:	Primary Antibodies
Applications:	ICC/IF, IHC, WB
Recommended Dilution:	WB,1:500 - 1:2000 IHC,1:50 - 1:200 IF,1:50 - 1:200
Reactivity:	Human, Mouse, Rat, Other (Wide Range)
Modifications:	Phospho S10
Host:	Rabbit
Isotype:	IgG
Clonality:	Polyclonal
Immunogen:	A synthetic phosphorylated peptide around S10 of human Histone H3 (NP_003484.1).
Formulation:	PBS with 0.09% Sodium azide,50% glycerol,pH7.3.
Concentration:	lot specific
Purification:	Affinity purification
Conjugation:	Unconjugated
Storage:	Store at -20°C. Avoid freeze / thaw cycles.
Stability:	Shelf life: one year from despatch.
Predicted Protein Size:	15kDa
Gene Name:	histone cluster 3, H3
Database Link:	<a href="#">Entrez Gene 8290 Human Q16695</a>



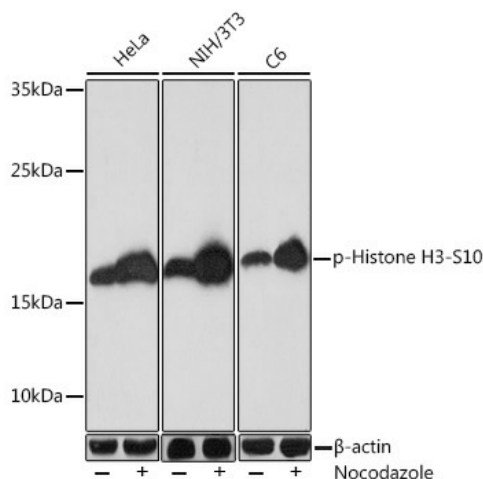
[View online »](#)

**Background:**

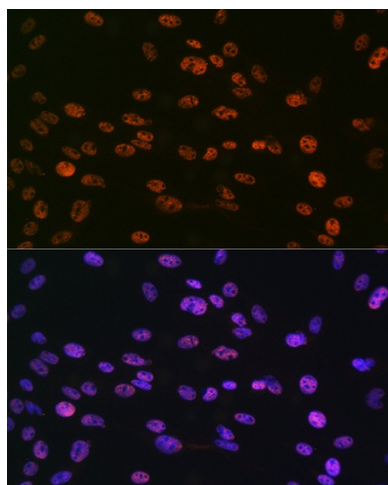
Histones are basic nuclear proteins that are responsible for the nucleosome structure of the chromosomal fiber in eukaryotes. Nucleosomes consist of approximately 146 bp of DNA wrapped around a histone octamer composed of pairs of each of the four core histones (H2A, H2B, H3, and H4). The chromatin fiber is further compacted through the interaction of a linker histone, H1, with the DNA between the nucleosomes to form higher order chromatin structures. This gene is intronless and encodes a replication-dependent histone that is a member of the histone H3 family. Transcripts from this gene lack polyA tails; instead, they contain a palindromic termination element. This gene is located separately from the other H3 genes that are in the histone gene cluster on chromosome 6p22-p21.3.

**Synonyms:**

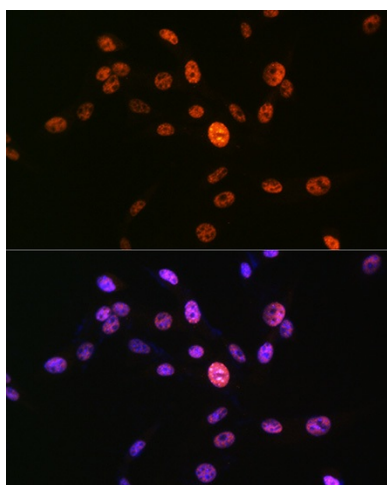
H3.4; H3/g; H3/t; H3FT; H3t; MGC126886; MGC126888

**Product images:**


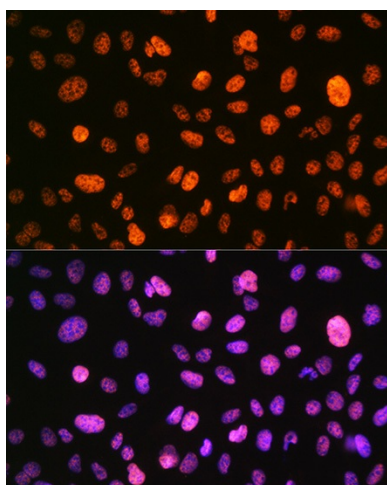
Western blot analysis of extracts of various cell lines, using Phospho-Histone H3-S10 Rabbit pAb (TA377072) at 1:1000 dilution. HeLa cells and NIH/3T3 cells and C6 cells were treated by Nocodazole (50 ng/ml) at 37°C for 20 hours. | Secondary antibody: HRP Goat Anti-Rabbit IgG (H+L) at 1:10000 dilution. | Lysates/proteins: 25ug per lane. | Blocking buffer: 3% BSA. | Detection: ECL Basic Kit. | Exposure time: 1s.



Immunofluorescence analysis of C6 cells using Phospho-Histone H3-S10 Rabbit pAb (TA377072) at dilution of 1:100 (40x lens). Blue: DAPI for nuclear staining.



Immunofluorescence analysis of NIH-3T3 cells using Phospho-Histone H3-S10 Rabbit pAb (TA377072) at dilution of 1:100 (40x lens). Blue: DAPI for nuclear staining.



Immunofluorescence analysis of U-2 OS cells using Phospho-Histone H3-S10 Rabbit pAb (TA377072) at dilution of 1:100 (40x lens). Blue: DAPI for nuclear staining.