

Product datasheet for **TA377053S**

H2BC21 Rabbit Polyclonal Antibody

Product data:

Product Type:	Primary Antibodies
Applications:	ICC/IF, WB
Recommended Dilution:	WB,1:500 - 1:2000 IF,1:50 - 1:200
Reactivity:	Human, Mouse, Rat, Other (Wide Range)
Modifications:	MonoMethyl K5
Host:	Rabbit
Isotype:	IgG
Clonality:	Polyclonal
Immunogen:	A synthetic peptide of Human H2BK5me1.
Formulation:	Buffer: PBS with 0.02% sodium azide,50% glycerol,pH7.3.
Concentration:	lot specific
Purification:	Affinity purification
Conjugation:	Unconjugated
Storage:	Store at -20°C. Avoid freeze / thaw cycles.
Stability:	Shelf life: one year from despatch.
Predicted Protein Size:	13kDa
Gene Name:	histone cluster 2, H2be
Database Link:	Entrez Gene 8349 Human Q16778



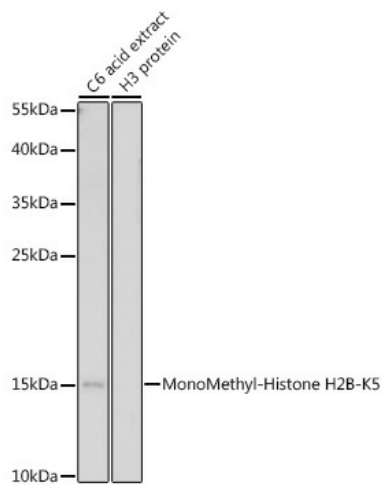
[View online »](#)

Background:

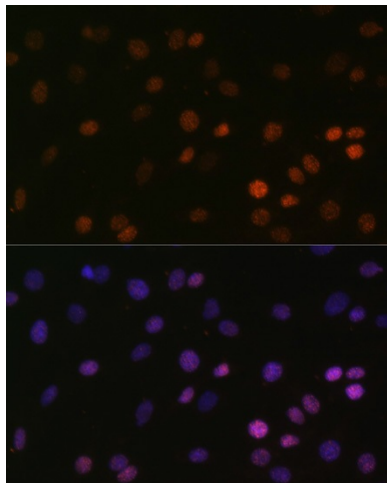
Histones are basic nuclear proteins that are responsible for the nucleosome structure of the chromosomal fiber in eukaryotes. Two molecules of each of the four core histones (H2A, H2B, H3, and H4) form an octamer, around which approximately 146 bp of DNA is wrapped in repeating units, called nucleosomes. The linker histone, H1, interacts with linker DNA between nucleosomes and functions in the compaction of chromatin into higher order structures. This gene encodes a replication-dependent histone that is a member of the histone H2B family, and generates two transcripts through the use of the conserved stem-loop termination motif, and the polyA addition motif. The protein has antibacterial and antifungal antimicrobial activity. [provided by RefSeq, Aug 2015]

Synonyms:

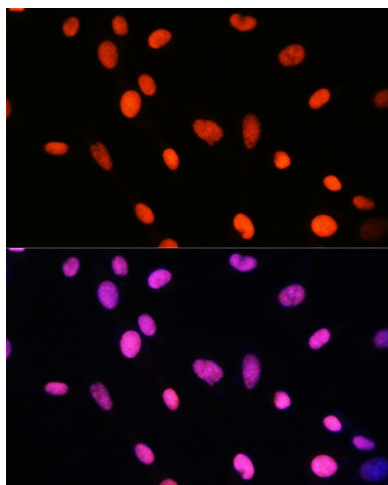
GL105; H2B; H2B-GL105; H2B.1; H2B.q; H2B/q; H2BFQ; H2BGL105; H2BQ; MGC119802; MGC119804; MGC129733; MGC129734

Product images:


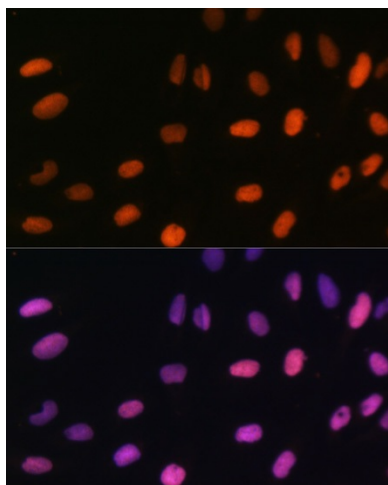
Western blot analysis of extracts of C6 cells, using MonoMethyl-Histone H2B-K5 antibody ([TA377053]) at 1:500 dilution. | Secondary antibody: HRP Goat Anti-Rabbit IgG (H+L) at 1:10000 dilution. | Lysates/proteins: 25ug per lane. | Blocking buffer: 3% nonfat dry milk in TBST. | Detection: ECL Enhanced Kit . | Exposure time: 180s.



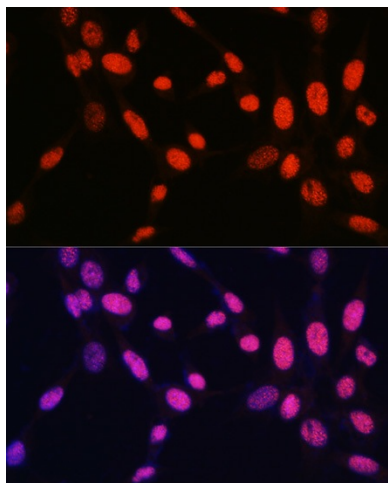
Immunofluorescence analysis of C6 cells using MonoMethyl-Histone H2B-K5 antibody ([TA377053]) at dilution of 1:100. Blue: DAPI for nuclear staining.



Immunofluorescence analysis of NIH-3T3 cells using MonoMethyl-Histone H2B-K5 antibody ([TA377053]) at dilution of 1:100. Blue: DAPI for nuclear staining.



Immunofluorescence analysis of U-2 OS cells using MonoMethyl-Histone H2B-K5 antibody ([TA377053]) at dilution of 1:100. Blue: DAPI for nuclear staining.



Immunofluorescence analysis of NIH-3T3 cells using MonoMethyl-Histone H2B-K5 antibody ([TA377053]) at dilution of 1:100. Blue: DAPI for nuclear staining.