

Product datasheet for **TA377032S**

HIP1R Rabbit Polyclonal Antibody

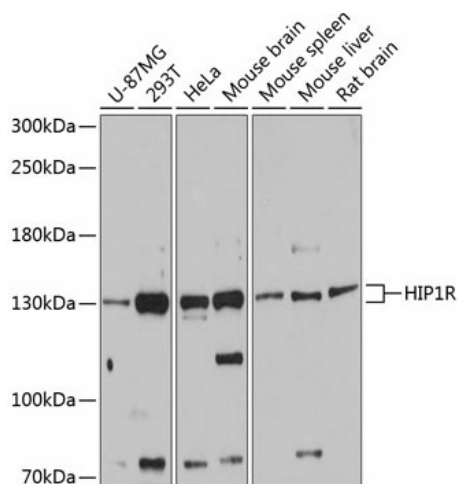
Product data:

Product Type:	Primary Antibodies
Applications:	ELISA, ICC/IF, WB
Recommended Dilution:	WB, 1:500 - 1:2000 IF/ICC, 1:50 - 1:200 ELISA, Recommended starting concentration is 1 µg/mL. Please optimize the concentration based on your specific assay requirements.
Reactivity:	Human, Mouse, Rat
Modifications:	Unmodified
Host:	Rabbit
Isotype:	IgG
Clonality:	Polyclonal
Formulation:	Buffer: PBS with 0.02% sodium azide, 50% glycerol, pH 7.3.
Concentration:	lot specific
Purification:	Affinity purification
Conjugation:	Unconjugated
Storage:	Store at -20°C. Avoid freeze / thaw cycles.
Stability:	Shelf life: one year from despatch.
Predicted Protein Size:	119kDa
Gene Name:	huntingtin interacting protein 1 related
Database Link:	Entrez Gene 9026 Human O75146
Background:	Enables several functions, including phosphatidylinositol phosphate binding activity; phosphatidylinositol-3,4-bisphosphate binding activity; and protein homodimerization activity. Involved in several processes, including positive regulation of signal transduction; protein stabilization; and regulation of organelle organization. Located in clathrin-coated vesicle; cytosol; and ruffle membrane.
Synonyms:	FLJ14000; FLJ27022; Hip1-related; HIP3; HIP12; ILWEQ; KIAA0655; MGC47513



[View online »](#)

Product images:



Western blot analysis of various lysates using HIP1R Rabbit pAb (TA377032) at 1:3000 dilution. Secondary antibody: HRP-conjugated Goat anti-Rabbit IgG (H+L) (AS014) at 1:10000 dilution. Lysates/proteins: 25µg per lane. Blocking buffer: 3% nonfat dry milk in TBST. Detection: ECL Basic Kit (RM00020). Exposure time: 60s.