

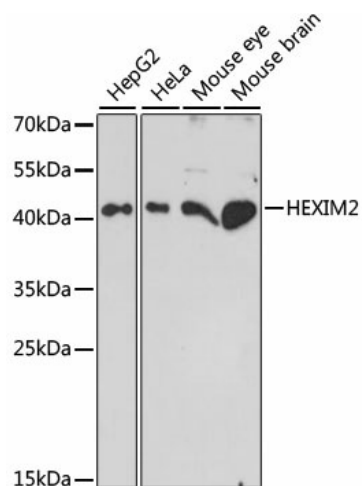
## Product datasheet for **TA377004S**

### HEXIM2 Rabbit Polyclonal Antibody

#### Product data:

Product Type:	Primary Antibodies
Applications:	ELISA, WB
Recommended Dilution:	WB, 1:200 - 1:2000 ELISA, Recommended starting concentration is 1 µg/mL. Please optimize the concentration based on your specific assay requirements.
Reactivity:	Human, Mouse
Modifications:	Unmodified
Host:	Rabbit
Isotype:	IgG
Clonality:	Polyclonal
Formulation:	Buffer: PBS with 0.02% sodium azide, 50% glycerol, pH 7.3.
Concentration:	lot specific
Purification:	Affinity purification
Conjugation:	Unconjugated
Storage:	Store at -20°C. Avoid freeze / thaw cycles.
Stability:	Shelf life: one year from despatch.
Predicted Protein Size:	32kDa
Gene Name:	hexamethylene bisacetamide inducible 2
Database Link:	<a href="#">Entrez Gene 124790 Human Q96MH2</a>
Background:	This gene encodes a member of the HEXIM family of proteins. This protein is a component of the 7SK small nuclear ribonucleoprotein. This protein has been found to negatively regulate the kinase activity of the cyclin-dependent kinase P-TEFb, which phosphorylates multiple target proteins to promote transcriptional elongation. This gene is located approximately 7 kb downstream from related family member HEXIM1 on chromosome 17. Alternative splicing results in multiple transcript variants.
Synonyms:	FLJ32384; L3


[View online »](#)

**Product images:**

Western blot analysis of various lysates using HEXIM2 Rabbit pAb (TA377004S) at 1:1000 dilution.

Secondary antibody: HRP-conjugated Goat anti-Rabbit IgG (H+L) (AS014) at 1:10000 dilution.

Lysates/proteins: 25µg per lane.

Blocking buffer: 3% nonfat dry milk in TBST.

Detection: ECL Enhanced Kit (RM00021).

Exposure time: 90s.