

## Product datasheet for **TA376991**

### DNA helicase HEL308 (HELQ) Rabbit Polyclonal Antibody

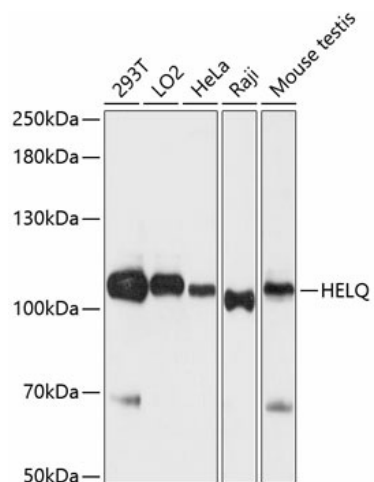
#### Product data:

Product Type:	Primary Antibodies
Applications:	WB
Recommended Dilution:	WB,1:1000 - 1:3000 IHC,1:50 - 1:200
Reactivity:	Human, Mouse, Rat
Modifications:	Unmodified
Host:	Rabbit
Isotype:	IgG
Clonality:	Polyclonal
Immunogen:	Recombinant fusion protein containing a sequence corresponding to amino acids 1-270 of human HEL308 (NP_598375.2).
Formulation:	Buffer: PBS with 0.02% sodium azide,50% glycerol,pH7.3.
Concentration:	lot specific
Purification:	Affinity purification
Conjugation:	Unconjugated
Storage:	Store at -20°C. Avoid freeze / thaw cycles.
Stability:	Shelf life: one year from despatch.
Predicted Protein Size:	15kDa/28kDa/35kDa/124kDa
Gene Name:	helicase, POLQ-like
Database Link:	<a href="#">Entrez Gene 113510 Human Q8TDG4</a>
Background:	HEL308 is a single-stranded DNA-dependent ATPase and DNA helicase (Marini and Wood, 2002 [PubMed 11751861]).[supplied by OMIM, Mar 2008]
Synonyms:	HEL308; MGC20604



[View online »](#)

## Product images:



Western blot analysis of extracts of various cell lines, using HELQ antibody (TA376991) at 1:3000 dilution. | Secondary antibody: HRP Goat Anti-Rabbit IgG (H+L) at 1:10000 dilution. | Lysates/proteins: 25ug per lane. | Blocking buffer: 3% nonfat dry milk in TBST. | Detection: ECL Basic Kit. | Exposure time: 90s.