

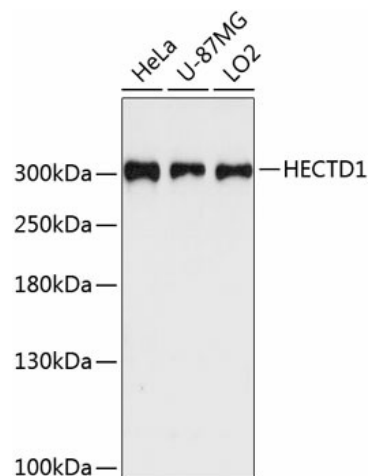
Product datasheet for **TA376990S**

HECTD1 Rabbit Polyclonal Antibody

Product data:

Product Type:	Primary Antibodies
Applications:	ELISA, WB
Recommended Dilution:	WB, 1:500 - 1:2000 ELISA, Recommended starting concentration is 1 µg/mL. Please optimize the concentration based on your specific assay requirements.
Reactivity:	Human
Modifications:	Unmodified
Host:	Rabbit
Isotype:	IgG
Clonality:	Polyclonal
Formulation:	Buffer: PBS with 0.02% sodium azide, 50% glycerol, pH 7.3.
Concentration:	lot specific
Purification:	Affinity purification
Conjugation:	Unconjugated
Storage:	Store at -20°C. Avoid freeze / thaw cycles.
Stability:	Shelf life: one year from despatch.
Predicted Protein Size:	289kDa
Gene Name:	HECT domain E3 ubiquitin protein ligase 1
Database Link:	Entrez Gene 25831 Human Q9ULT8
Background:	Predicted to enable ubiquitin protein ligase activity. Predicted to be involved in anatomical structure development; positive regulation of proteasomal ubiquitin-dependent protein catabolic process; and protein K63-linked ubiquitination. Predicted to act upstream of or within several processes, including animal organ development; negative regulation of protein localization to plasma membrane; and protein autoubiquitination.
Synonyms:	EULIR; FLJ38315; KIAA1131

[View online »](#)

Product images:

Western blot analysis of various lysates using HECTD1 Rabbit pAb ([TA376990]) at 1:3000 dilution.

Secondary antibody: HRP-conjugated Goat anti-Rabbit IgG (H+L) at 1:10000 dilution.

Lysates/proteins: 25µg per lane.

Blocking buffer: 3% nonfat dry milk in TBST.

Detection: ECL Enhanced Kit .

Exposure time: 90s.