

Product datasheet for **TA376966**

S Protein Rabbit Polyclonal Antibody

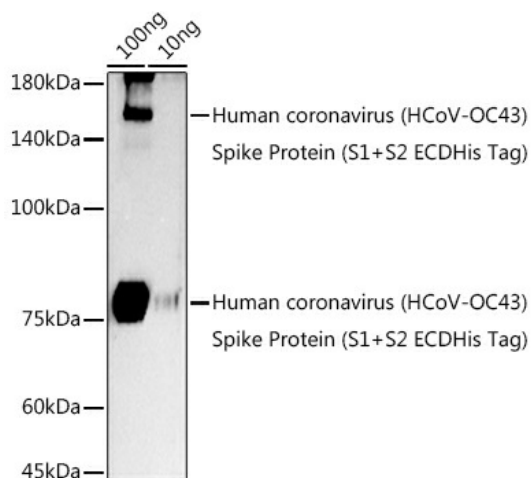
Product data:

Product Type:	Primary Antibodies
Applications:	WB
Recommended Dilution:	WB,1:500 - 1:2000
Reactivity:	Human coronavirus OC43
Modifications:	Unmodified
Host:	Rabbit
Isotype:	IgG
Clonality:	Polyclonal
Immunogen:	A synthetic peptide of HCoV-OC43 Spike S2
Formulation:	Buffer: PBS with 0.02% sodium azide,50% glycerol,pH7.3.
Concentration:	lot specific
Purification:	Affinity purification
Conjugation:	Unconjugated
Storage:	Store at -20°C. Avoid freeze / thaw cycles.
Stability:	Shelf life: one year from despatch.
Predicted Protein Size:	150kDa
Database Link:	P36334
Background:	S1 attaches the virion to the cell membrane by interacting with sialic acid-containing cell receptors, initiating the infection.; [Spike protein S1]: attaches the virion to the cell membrane by interacting with host receptor, initiating the infection.



[View online »](#)

Product images:



Western blot analysis of extracts of Human coronavirus (HCoV-OC43) Spike Protein (S1+S2 ECDHis Tag), using HCoV-OC43 Spike S2 antibody (TA376966) at 1:1000 dilution. | Secondary antibody: HRP Goat Anti-Rabbit IgG (H+L) at 1:10000 dilution. | Lysates/proteins: 25ug per lane. | Blocking buffer: 3% nonfat dry milk in TBST. | Detection: ECL Enhanced Kit. | Exposure time: 180s.