

Product datasheet for **TA376943S**

HB EGF (HBEGF) Rabbit Polyclonal Antibody

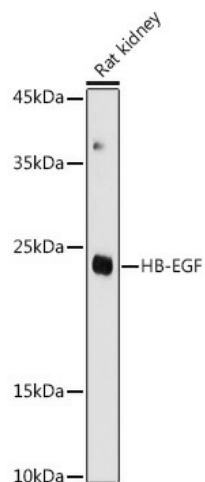
Product data:

Product Type:	Primary Antibodies
Applications:	ELISA, ICC/IF, WB
Recommended Dilution:	WB, 1:500 - 1:1000 IF/ICC, 1:50 - 1:200 ELISA, Recommended starting concentration is 1 µg/mL. Please optimize the concentration based on your specific assay requirements.
Reactivity:	Human, Mouse, Rat
Modifications:	Unmodified
Host:	Rabbit
Isotype:	IgG
Clonality:	Polyclonal
Formulation:	Buffer: PBS with 0.02% sodium azide, 50% glycerol, pH 7.3.
Concentration:	lot specific
Purification:	Affinity purification
Conjugation:	Unconjugated
Storage:	Store at -20°C. Avoid freeze / thaw cycles.
Stability:	Shelf life: one year from despatch.
Predicted Protein Size:	23kDa
Gene Name:	heparin binding EGF like growth factor
Database Link:	Entrez Gene 1839 Human Q99075
Background:	Enables growth factor activity and heparin binding activity. Involved in several processes, including epidermal growth factor receptor signaling pathway; positive regulation of protein kinase B signaling; and positive regulation of wound healing. Located in cell surface and extracellular space. Implicated in glomerulosclerosis and perinatal necrotizing enterocolitis.
Synonyms:	DTR; DTS; DTSF; HEGFL

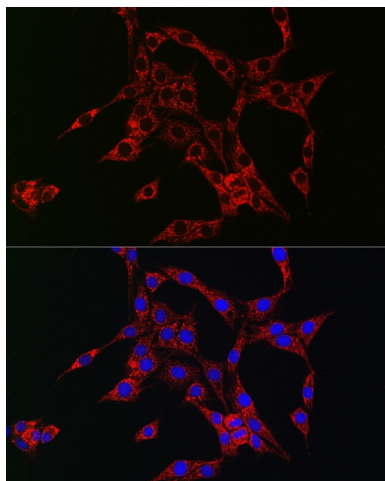


[View online »](#)

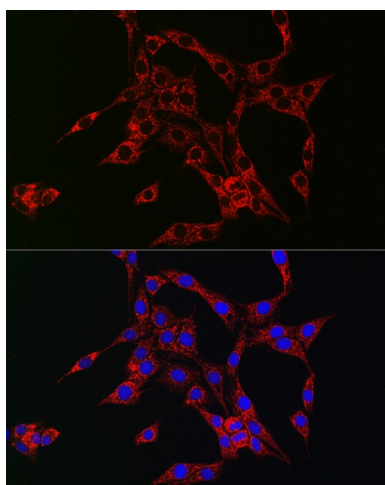
Product images:



Western blot analysis of lysates from Rat kidney



Immunofluorescence analysis of NIH/3T3 cells using HB-EGF Rabbit pAb ([TA376943]) at dilution of 1:100 (40x lens). Secondary antibody: Cy3-conjugated Goat anti-Rabbit IgG (H+L) (AS007) at 1:500 dilution. Blue: DAPI for nuclear staining.



Immunofluorescence analysis of PC-12 cells using HB-EGF Rabbit pAb ([TA376943]) at dilution of 1:100 (40x lens). Secondary antibody: Cy3-conjugated Goat anti-Rabbit IgG (H+L) (AS007) at 1:500 dilution. Blue: DAPI for nuclear staining.