

Product datasheet for **TA376943**

HB EGF (HBEGF) Rabbit Polyclonal Antibody

Product data:

Product Type:	Primary Antibodies
Applications:	ICC/IF, WB
Recommended Dilution:	WB,1:500 - 1:2000 IF,1:50 - 1:200
Reactivity:	Human, Mouse, Rat
Modifications:	Unmodified
Host:	Rabbit
Isotype:	IgG
Clonality:	Polyclonal
Immunogen:	Recombinant fusion protein containing a sequence corresponding to amino acids 20-160 of human HB-EGF (NP_001936.1).
Formulation:	Buffer: PBS with 0.02% sodium azide,50% glycerol,pH7.3.
Concentration:	lot specific
Purification:	Affinity purification
Conjugation:	Unconjugated
Storage:	Store at -20°C. Avoid freeze / thaw cycles.
Stability:	Shelf life: one year from despatch.
Predicted Protein Size:	23kDa
Gene Name:	heparin binding EGF like growth factor
Database Link:	Entrez Gene 1839 Human Q99075



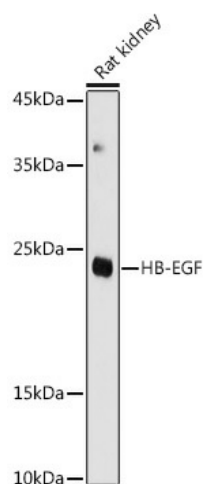
[View online »](#)

Background:

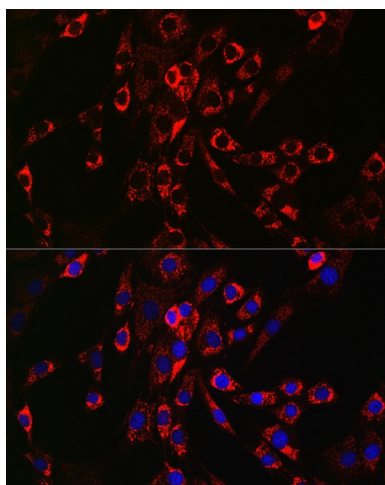
Heparin-binding EGF-like growth factor (HB-EGF) is a 12-16 kDa member of the epidermal growth factor (EGF) family. It possesses an EGF-like domain, and a heparin-binding motif. Mature HB-EGF is a soluble peptide that arises from proteolytic processing of the transmembrane form. Human HB-EGF shows 76% and 73% sequence identity with rat and mouse HB-EGF, respectively. It is required for normal cardiac valve formation and normal heart function, promotes smooth muscle cell proliferation. It may be involved in macrophage-mediated cellular proliferation; it is mitogenic for fibroblasts, but not endothelial cells. HB-EGF is classified as a group 2 ErbB ligand based on its ability to activate both the EGF/ErbB1 and ErbB4 receptors. Activity associated with ErbB4 binding appears to be limited to non-mitogenic actions, while EGFR binding induces both mitogenic and non-mitogenic activity.

Synonyms:

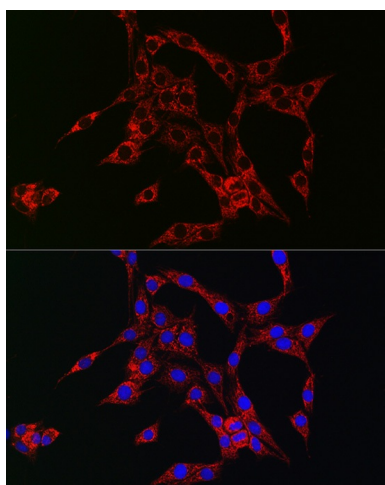
DTR; DTS; DTSE; HEGFL

Product images:

Western blot analysis of extracts of Rat kidney, using HB-EGF antibody (TA376943) at 1:1000 dilution. | Secondary antibody: HRP Goat Anti-Rabbit IgG (H+L) at 1:10000 dilution. | Lysates/proteins: 25ug per lane. | Blocking buffer: 3% nonfat dry milk in TBST. | Detection: ECL Basic Kit. | Exposure time: 180s.



Immunofluorescence analysis of NIH/3T3 cells using HB-EGF Rabbit pAb (TA376943) at dilution of 1:150 (40x lens). Blue: DAPI for nuclear staining.



Immunofluorescence analysis of PC-12 cells using HB-EGF Rabbit pAb (TA376943) at dilution of 1:150 (40x lens). Blue: DAPI for nuclear staining.