

Product datasheet for **TA376929S**

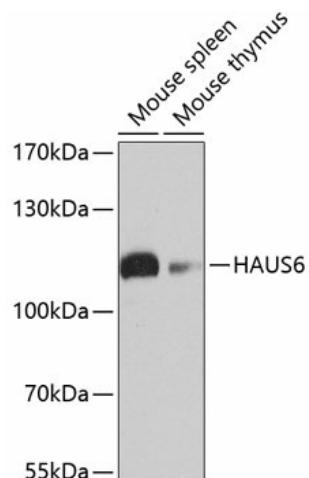
FAM29A (HAUS6) Rabbit Polyclonal Antibody

Product data:

Product Type:	Primary Antibodies
Applications:	ELISA, WB
Recommended Dilution:	WB, 1:500 - 1:2000 ELISA, Recommended starting concentration is 1 µg/mL. Please optimize the concentration based on your specific assay requirements.
Reactivity:	Human, Mouse
Modifications:	Unmodified
Host:	Rabbit
Isotype:	IgG
Clonality:	Polyclonal
Formulation:	Buffer: PBS with 0.02% sodium azide, 50% glycerol, pH 7.3.
Concentration:	lot specific
Purification:	Affinity purification
Conjugation:	Unconjugated
Storage:	Store at -20°C. Avoid freeze / thaw cycles.
Stability:	Shelf life: one year from despatch.
Predicted Protein Size:	109kDa
Gene Name:	HAUS augmin like complex subunit 6
Database Link:	Entrez Gene 54801 Human Q7Z4H7
Background:	The protein encoded by this gene is a subunit of the augmin complex. The augmin complex plays a role in microtubule attachment to the kinetochore and central spindle formation. This protein may have a role in efficient chromosome congression and segregation by promoting microtubule-dependent microtubule amplification. Pseudogenes of this gene are located on chromosomes 7 and 20. Alternative splicing results in multiple transcript variants that encode different protein isoforms.
Synonyms:	Dgt6; FAM29A; FLJ20060; KIAA1574; MGC102696; MGC138798; MGC138799; RP11-296P7.3



[View online »](#)

Product images:

Western blot analysis of various lysates using HAUS6 Rabbit pAb ([TA376929]) at 1:1000 dilution.

Secondary antibody: HRP-conjugated Goat anti-Rabbit IgG (H+L) at 1:10000 dilution.

Lysates/proteins: 25µg per lane.

Blocking buffer: 3% nonfat dry milk in TBST.

Detection: ECL Basic Kit .

Exposure time: 10s.