

Product datasheet for **TA376927S**

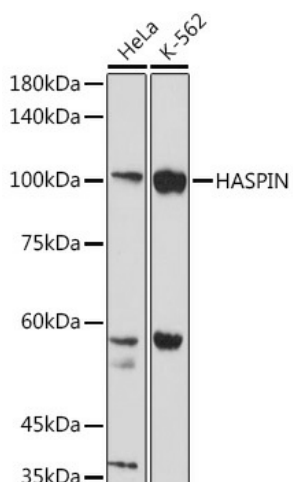
Haspin (GSG2) Rabbit Polyclonal Antibody

Product data:

Product Type:	Primary Antibodies
Applications:	ELISA, WB
Recommended Dilution:	WB, 1:500 - 1:1000 ELISA, Recommended starting concentration is 1 µg/mL. Please optimize the concentration based on your specific assay requirements.
Reactivity:	Human, Mouse
Modifications:	Unmodified
Host:	Rabbit
Isotype:	IgG
Clonality:	Polyclonal
Formulation:	Buffer: PBS with 0.02% sodium azide, 50% glycerol, pH 7.3.
Concentration:	lot specific
Purification:	Affinity purification
Conjugation:	Unconjugated
Storage:	Store at -20°C. Avoid freeze / thaw cycles.
Stability:	Shelf life: one year from despatch.
Predicted Protein Size:	88kDa
Gene Name:	germ cell associated 2, haspin
Database Link:	Entrez Gene 83903 Human Q8TF76
Background:	Enables ATP binding activity and histone kinase activity (H3-T3 specific). Involved in histone H3-T3 phosphorylation involved in chromosome passenger complex localization to kinetochore; intracellular signal transduction; and mitotic sister chromatid cohesion. Located in centrosome; nucleoplasm; and spindle.
Synonyms:	H-haspin; haspin


[View online »](#)

Product images:



Western blot analysis of various lysates using HASPIN Rabbit pAb (TA376927S) at 1:1000 dilution.

Secondary antibody: HRP-conjugated Goat anti-Rabbit IgG (H+L) (AS014) at 1:10000 dilution.

Lysates/proteins: 25µg per lane.

Blocking buffer: 3% nonfat dry milk in TBST.

Detection: ECL Basic Kit (RM00020).

Exposure time: 30s.