

Product datasheet for **TA376927**

Haspin (GSG2) Rabbit Polyclonal Antibody

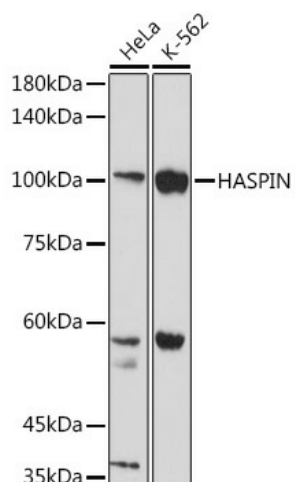
Product data:

Product Type:	Primary Antibodies
Applications:	WB
Recommended Dilution:	WB,1:1000 - 1:2000
Reactivity:	Human, Mouse
Modifications:	Unmodified
Host:	Rabbit
Isotype:	IgG
Clonality:	Polyclonal
Immunogen:	Recombinant protein of human HASPIN.
Formulation:	Buffer: PBS with 0.02% sodium azide,50% glycerol,pH7.3.
Concentration:	lot specific
Purification:	Affinity purification
Conjugation:	Unconjugated
Storage:	Store at -20°C. Avoid freeze / thaw cycles.
Stability:	Shelf life: one year from despatch.
Predicted Protein Size:	88kDa
Gene Name:	germ cell associated 2, haspin
Database Link:	Entrez Gene 83903 Human Q8TF76
Background:	Serine/threonine-protein kinase that phosphorylates histone H3 at 'Thr-3' (H3T3ph during mitosis. May act through H3T3ph to both position and modulate activation of AURKB and other components of the chromosomal passenger complex (CPC at centromeres to ensure proper chromatid cohesion, metaphase alignment and normal progression through the cell cycle.
Synonyms:	H-haspin; haspin



[View online »](#)

Product images:



Western blot analysis of extracts of various cell lines, using HASPIN antibody (TA376927) at 1:1000 dilution. | Secondary antibody: HRP Goat Anti-Rabbit IgG (H+L) at 1:10000 dilution. | Lysates/proteins: 25ug per lane. | Blocking buffer: 3% nonfat dry milk in TBST. | Detection: ECL Basic Kit . | Exposure time: 30s.