

## Product datasheet for **TA376920S**

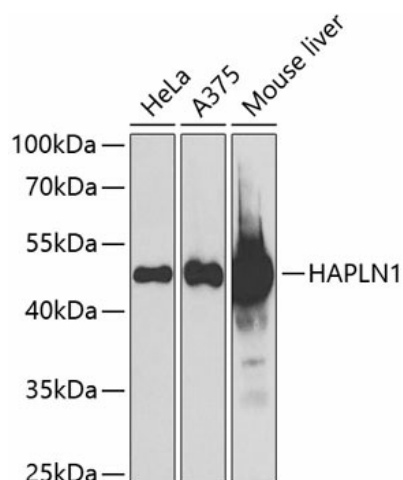
### **HAPLN1 Rabbit Polyclonal Antibody**

#### **Product data:**

Product Type:	Primary Antibodies
Applications:	ELISA, IHC, WB
Recommended Dilution:	WB, 1:500 - 1:2000 IHC-P, 1:100 - 1:500 ELISA, Recommended starting concentration is 1 µg/mL. Please optimize the concentration based on your specific assay requirements.
Reactivity:	Human, Mouse, Rat
Modifications:	Unmodified
Host:	Rabbit
Isotype:	IgG
Clonality:	Polyclonal
Formulation:	Buffer: PBS with 0.02% sodium azide, 50% glycerol, pH 7.3.
Concentration:	lot specific
Purification:	Affinity purification
Conjugation:	Unconjugated
Storage:	Store at -20°C. Avoid freeze / thaw cycles.
Stability:	Shelf life: one year from despatch.
Predicted Protein Size:	40kDa
Gene Name:	hyaluronan and proteoglycan link protein 1
Database Link:	<a href="#">Entrez Gene 1404 Human P10915</a>
Background:	Predicted to enable hyaluronic acid binding activity. Predicted to be an extracellular matrix structural constituent conferring compression resistance. Predicted to be involved in central nervous system development and skeletal system development. Colocalizes with collagen-containing extracellular matrix.
Synonyms:	CRTL1; LP



[View online »](#)

**Product images:**


Western blot analysis of various lysates using HAPLN1 Rabbit pAb (TA376920S) at 1:1000 dilution.

Secondary antibody: HRP-conjugated Goat anti-Rabbit IgG (H+L) (AS014) at 1:10000 dilution.

Lysates/proteins: 25µg per lane.

Blocking buffer: 3% nonfat dry milk in TBST.

Detection: ECL Basic Kit (RM00020).

Exposure time: 90s.