

Product datasheet for **TA376904S**

H4C14 Rabbit Polyclonal Antibody

Product data:

| | |
|-------------------------|--|
| Product Type: | Primary Antibodies |
| Applications: | Dot, WB |
| Recommended Dilution: | DB, 1:500 - 1:4000 WB, 1:500 - 1:2000 |
| Reactivity: | Human, Mouse, Rat, Other (Wide Range) |
| Host: | Rabbit |
| Isotype: | IgG |
| Clonality: | Polyclonal |
| Immunogen: | A synthetic peptide of human Lactic acid -Histone H4-K5. |
| Formulation: | PBS with 0.05% proclin300, 50% glycerol, pH7.3. |
| Concentration: | lot specific |
| Purification: | Affinity purification |
| Conjugation: | Unconjugated |
| Storage: | Store at -20°C. Avoid freeze / thaw cycles. |
| Stability: | Shelf life: one year from despatch. |
| Predicted Protein Size: | 11kDa |
| Gene Name: | histone cluster 2, H4a |
| Database Link: | Entrez Gene 8370 Human P62805 |



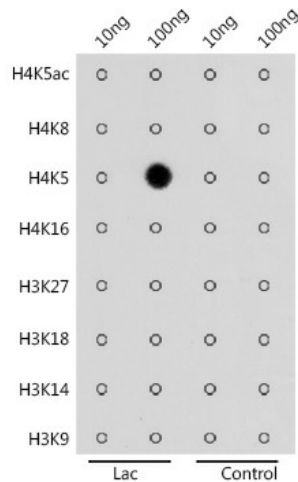
[View online »](#)

Background:

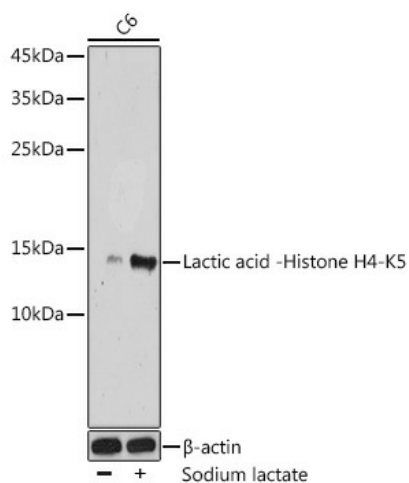
Histones are basic nuclear proteins that are responsible for the nucleosome structure of the chromosomal fiber in eukaryotes. This structure consists of approximately 146 bp of DNA wrapped around a nucleosome, an octamer composed of pairs of each of the four core histones (H2A, H2B, H3, and H4). The chromatin fiber is further compacted through the interaction of a linker histone, H1, with the DNA between the nucleosomes to form higher order chromatin structures. This gene is intronless and encodes a replication-dependent histone that is a member of the histone H4 family. Transcripts from this gene lack polyA tails; instead, they contain a palindromic termination element. This gene is found in a histone cluster on chromosome 1. This gene is one of four histone genes in the cluster that are duplicated; this record represents the centromeric copy.

Synonyms:

FO108; H4; H4/A; H4/B; H4/C; H4/D; H4/E; H4/G; H4/H; H4/I; H4/J; H4/K; H4/M; H4/N; H4/O; H4F2; H4FA; H4FB; H4FC; H4FD; H4FE; H4FG; H4FH; H4FI; H4FJ; H4FK; H4FM; H4FN; H4FO; HIST2H4; OTTHUMP00000013906; OTTHUMP00000194863

Product images:


Dot-blot analysis of all sorts of peptides using Lactic acid -Histone H4-K5 antibody ([TA376904]) at 1:4000 dilution.



Western blot analysis of extracts of C6 cells, using Lactic acid-Histone H4-K5 antibody ([TA376904]) at 1:500 dilution. C6 cells were treated by Sodium lactate (100mM) for 24h. | Secondary antibody: HRP Goat Anti-Rabbit IgG (H+L) at 1:10000 dilution. | Lysates/proteins: 25ug per lane. | Blocking buffer: 3% BSA. | Detection: ECL Basic Kit. | Exposure time: 3min.