

## Product datasheet for **TA376893**

### Granzyme H (GZMH) Rabbit Polyclonal Antibody

#### Product data:

Product Type:	Primary Antibodies
Applications:	WB
Recommended Dilution:	WB,1:500 - 1:2000
Reactivity:	Human, Mouse
Modifications:	Unmodified
Host:	Rabbit
Isotype:	IgG
Clonality:	Polyclonal
Immunogen:	Recombinant fusion protein containing a sequence corresponding to amino acids 20-246 of human GZMH (NP_219491.1).
Formulation:	Buffer: PBS with 0.02% sodium azide,50% glycerol,pH7.3.
Concentration:	lot specific
Purification:	Affinity purification
Conjugation:	Unconjugated
Storage:	Store at -20°C. Avoid freeze / thaw cycles.
Stability:	Shelf life: one year from despatch.
Predicted Protein Size:	12kDa/17kDa/27kDa
Gene Name:	granzyme H
Database Link:	<a href="#">Entrez Gene 2999 Human P20718</a>

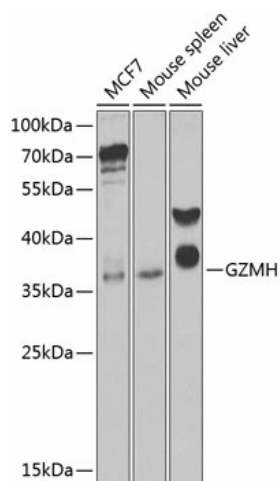
**Background:** This gene encodes a member of the peptidase S1 family of serine proteases. Alternative splicing results in multiple transcript variants, at least one of which encodes a preproprotein that is proteolytically processed to generate a chymotrypsin-like protease. This protein is reported to be constitutively expressed in the NK (natural killer) cells of the immune system and may play a role in the cytotoxic arm of the innate immune response by inducing target cell death and by directly cleaving substrates in pathogen-infected cells. This gene is present in a gene cluster with another member of the granzyme subfamily on chromosome 14.



[View online »](#)

Synonyms: CCP-X; CGL-2; CGL2; CSP-C; CTLA1; CTSGL2

### Product images:



Western blot analysis of extracts of various cell lines, using GZMH Antibody (TA376893) at 1:1000 dilution. | Secondary antibody: HRP Goat Anti-Rabbit IgG (H+L) at 1:10000 dilution. | Lysates/proteins: 25ug per lane. | Blocking buffer: 3% nonfat dry milk in TBST. | Detection: ECL Enhanced Kit. | Exposure time: 30s.