

Product datasheet for **TA376889**

Glycogen synthase 1 (GYS1) Rabbit Polyclonal Antibody

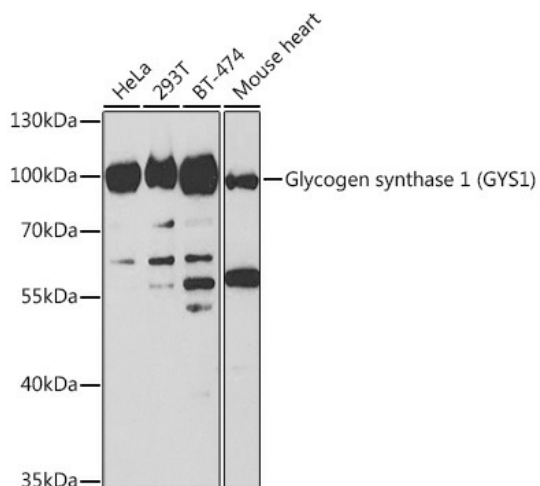
Product data:

Product Type:	Primary Antibodies
Applications:	ICC/IF, IHC, WB
Recommended Dilution:	WB,1:500 - 1:2000 IHC,1:50 - 1:200 IF,1:50 - 1:100
Reactivity:	Human, Mouse, Rat
Modifications:	Unmodified
Host:	Rabbit
Isotype:	IgG
Clonality:	Polyclonal
Immunogen:	Recombinant fusion protein containing a sequence corresponding to amino acids 488-737 of human Glycogen synthase 1 (Glycogen synthase 1 (GYS1)) (NP_002094.2).
Formulation:	Buffer: PBS with 0.02% sodium azide,50% glycerol,pH7.3.
Concentration:	lot specific
Purification:	Affinity purification
Conjugation:	Unconjugated
Storage:	Store at -20°C. Avoid freeze / thaw cycles.
Stability:	Shelf life: one year from despatch.
Predicted Protein Size:	76kDa/83kDa
Gene Name:	glycogen synthase 1
Database Link:	Entrez Gene 2997 Human P13807
Background:	The protein encoded by this gene catalyzes the addition of glucose monomers to the growing glycogen molecule through the formation of alpha-1,4-glycoside linkages. Mutations in this gene are associated with muscle glycogen storage disease. Alternatively spliced transcript variants encoding different isoforms have been found for this gene.
Synonyms:	GSY; GYS

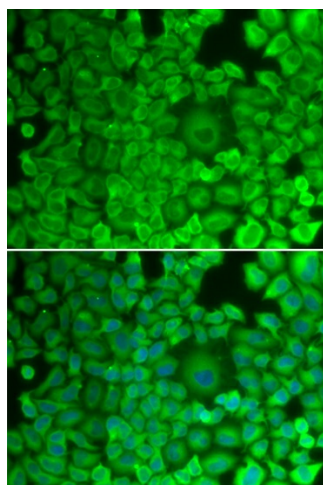


[View online »](#)

Product images:



Western blot analysis of extracts of various cell lines, using Glycogen synthase 1 (Glycogen synthase 1 (GYS1)) antibody (TA376889) at 1:1000 dilution. | Secondary antibody: HRP Goat Anti-Rabbit IgG (H+L) at 1:10000 dilution. | Lysates/proteins: 25ug per lane. | Blocking buffer: 3% nonfat dry milk in TBST. | Detection: ECL Basic Kit . | Exposure time: 30s.



Immunofluorescence analysis of HeLa cells using Glycogen synthase 1 (Glycogen synthase 1 (GYS1)) antibody (TA376889). Blue: DAPI for nuclear staining.