

## Product datasheet for **TA376888**

### GYPB Rabbit Polyclonal Antibody

#### Product data:

Product Type:	Primary Antibodies
Applications:	WB
Recommended Dilution:	WB,1:500 - 1:2000
Reactivity:	Human, Mouse
Modifications:	Unmodified
Host:	Rabbit
Isotype:	IgG
Clonality:	Polyclonal
Immunogen:	A synthetic peptide corresponding to a sequence within amino acids 1-91 of human GYPB (NP_002091.3).
Formulation:	Buffer: PBS with 0.02% sodium azide,50% glycerol,pH7.3.
Concentration:	lot specific
Purification:	Affinity purification
Conjugation:	Unconjugated
Storage:	Store at -20°C. Avoid freeze / thaw cycles.
Stability:	Shelf life: one year from despatch.
Predicted Protein Size:	6kDa/9kDa
Gene Name:	glycophorin B (MNS blood group)
Database Link:	<a href="#">Entrez Gene 2994 Human P06028</a>



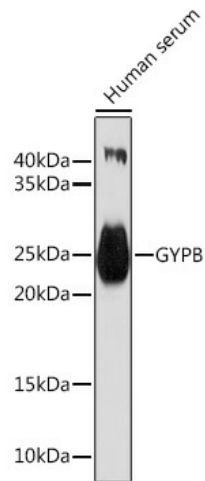
[View online »](#)

**Background:**

Glycophorins A (GYPA) and B (GYPB) are major sialoglycoproteins of the human erythrocyte membrane which bear the antigenic determinants for the MN and Ss blood groups. GYPB gene consists of 5 exons and has 97% sequence homology with GYPA from the 5' UTR to the coding sequence encoding the first 45 amino acids. In addition to the M or N and S or s antigens, that commonly occur in all populations, about 40 related variant phenotypes have been identified. These variants include all the variants of the Miltenberger complex and several isoforms of Sta; also, Dantu, Sat, He, Mg, and deletion variants Ena, S-s-U- and Mk. Most of the variants are the result of gene recombinations between GYPA and GYPB. Alternate splicing results in multiple transcript variants.

**Synonyms:**

CD235b; GPB; GPB.NY; GYPHe.NY; HGpMiVI; MNS; PAS-3; SS

**Product images:**

Western blot analysis of extracts of Human serum, using GYPB Rabbit pAb (TA376888) at 1:1000 dilution. | Secondary antibody: HRP Goat Anti-Rabbit IgG (H+L) at 1:10000 dilution. | Lysates/proteins: 25ug per lane. | Blocking buffer: 3% nonfat dry milk in TBST. | Detection: ECL Basic Kit . | Exposure time: 60s.