

Product datasheet for **TA376884S**

CED6 (GULP1) Rabbit Polyclonal Antibody

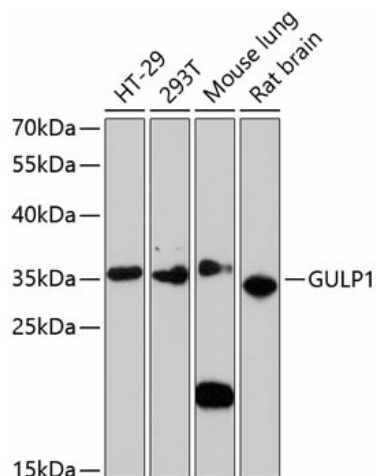
Product data:

Product Type:	Primary Antibodies
Applications:	IHC, WB
Recommended Dilution:	WB,1:500 - 1:2000 IHC,1:50 - 1:200
Reactivity:	Human, Mouse, Rat
Modifications:	Unmodified
Host:	Rabbit
Isotype:	IgG
Clonality:	Polyclonal
Immunogen:	Recombinant fusion protein containing a sequence corresponding to amino acids 1-130 of human GULP1 (NP_057399.1).
Formulation:	Buffer: PBS with 0.02% sodium azide,50% glycerol,pH7.3.
Concentration:	lot specific
Purification:	Affinity purification
Conjugation:	Unconjugated
Storage:	Store at -20°C. Avoid freeze / thaw cycles.
Stability:	Shelf life: one year from despatch.
Predicted Protein Size:	19kDa/22kDa/33kDa/34kDa
Gene Name:	GULP, engulfment adaptor PTB domain containing 1
Database Link:	Entrez Gene 51454 Human Q9UBP9
Background:	The protein encoded by this gene is an adapter protein necessary for the engulfment of apoptotic cells by phagocytes. Several transcript variants, some protein coding and some thought not to be protein coding, have been found for this gene.
Synonyms:	CED-6; CED6; FLJ31156; GULP; OTTHUMP00000205908; OTTHUMP00000205909; OTTHUMP00000205911



[View online »](#)

Product images:



Western blot analysis of extracts of various cell lines, using GULP1 antibody ([TA376884]) at 1:3000 dilution. | Secondary antibody: HRP Goat Anti-Rabbit IgG (H+L) at 1:10000 dilution. | Lysates/proteins: 25ug per lane. | Blocking buffer: 3% nonfat dry milk in TBST. | Detection: ECL Enhanced Kit . | Exposure time: 90s.