

Product datasheet for **TA376878S**

GUCY1B1 Rabbit Polyclonal Antibody

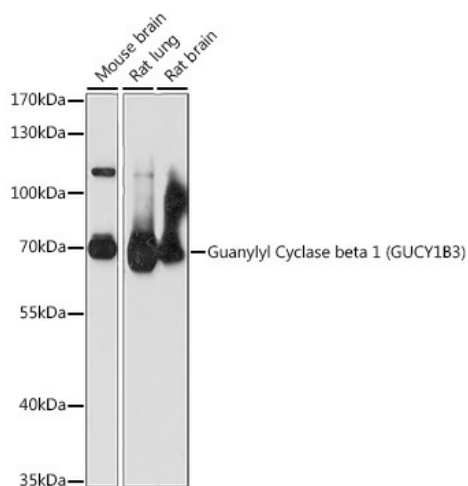
Product data:

Product Type:	Primary Antibodies
Applications:	WB
Recommended Dilution:	WB,1:200 - 1:2000 IHC,1:50 - 1:200
Reactivity:	Human, Mouse, Rat
Modifications:	Unmodified
Host:	Rabbit
Isotype:	IgG
Clonality:	Polyclonal
Immunogen:	Recombinant fusion protein containing a sequence corresponding to amino acids 1-250 of human Guanylyl Cyclase beta 1 (Guanylyl Cyclase beta 1 (GUCY1B3)) (NP_000848.1).
Formulation:	Buffer: PBS with 0.02% sodium azide,50% glycerol,pH7.3.
Concentration:	lot specific
Purification:	Affinity purification
Conjugation:	Unconjugated
Storage:	Store at -20°C. Avoid freeze / thaw cycles.
Stability:	Shelf life: one year from despatch.
Predicted Protein Size:	66kDa/68kDa/70kDa
Gene Name:	guanylate cyclase 1, soluble, beta 3
Database Link:	Entrez Gene 2983 Human Q02153
Background:	This gene encodes the beta subunit of the soluble guanylate cyclase (sGC), which catalyzes the conversion of GTP (guanosine triphosphate) to cGMP (cyclic guanosine monophosphate). The encoded protein contains an HNOX domain, which serves as a receptor for ligands such as nitric oxide, oxygen and nitrovasodilator drugs. Alternative splicing results in multiple transcript variants.
Synonyms:	GC-S-beta-1; GC-SB3; GCS-beta-1; GCS-beta-3; GUC1B3; GUCB3; GUCSB3; GUCY1B1



[View online »](#)

Product images:



Western blot analysis of extracts of various cell lines, using Guanylyl Cyclase beta 1 (Guanylyl Cyclase beta 1 (GUCY1B3)) antibody ([TA376878]) at 1:1000 dilution. | Secondary antibody: HRP Goat Anti-Rabbit IgG (H+L) at 1:10000 dilution. | Lysates/proteins: 25ug per lane. | Blocking buffer: 3% nonfat dry milk in TBST. | Detection: ECL Basic Kit . | Exposure time: 30S.