

## Product datasheet for **TA376875S**

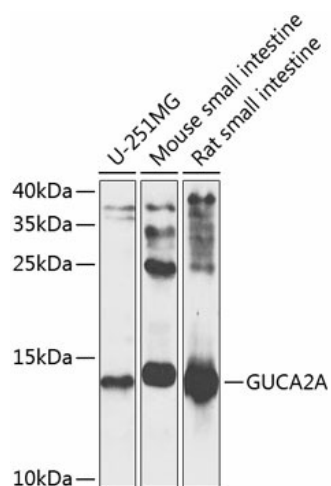
### Guanylin (GUCA2A) Rabbit Polyclonal Antibody

#### Product data:

Product Type:	Primary Antibodies
Applications:	ELISA, WB
Recommended Dilution:	WB, 1:500 - 1:2000 ELISA, Recommended starting concentration is 1 µg/mL. Please optimize the concentration based on your specific assay requirements.
Reactivity:	Human, Mouse, Rat
Modifications:	Unmodified
Host:	Rabbit
Isotype:	IgG
Clonality:	Polyclonal
Formulation:	Buffer: PBS with 0.02% sodium azide, 50% glycerol, pH 7.3.
Concentration:	lot specific
Purification:	Affinity purification
Conjugation:	Unconjugated
Storage:	Store at -20°C. Avoid freeze / thaw cycles.
Stability:	Shelf life: one year from despatch.
Predicted Protein Size:	12kDa
Gene Name:	guanylate cyclase activator 2A
Database Link:	<a href="#">Entrez Gene 2980 Human Q02747</a>
Background:	Predicted to enable guanylate cyclase activator activity. Predicted to be involved in positive regulation of guanylate cyclase activity and signal transduction. Predicted to be located in extracellular region.
Synonyms:	Gap-I; GUANYLIN; GUCA2; STARA

[View online »](#)

## Product images:



Western blot analysis of various lysates using GUCA2A Rabbit pAb (TA376875S) at 1:1000 dilution. Secondary antibody: HRP-conjugated Goat anti-Rabbit IgG (H+L) (AS014) at 1:10000 dilution. Lysates/proteins: 25µg per lane. Blocking buffer: 3% nonfat dry milk in TBST. Detection: ECL Enhanced Kit (RM00021). Exposure time: 5s.